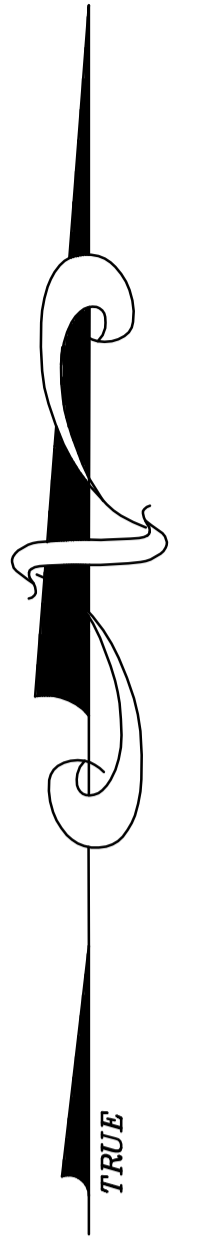
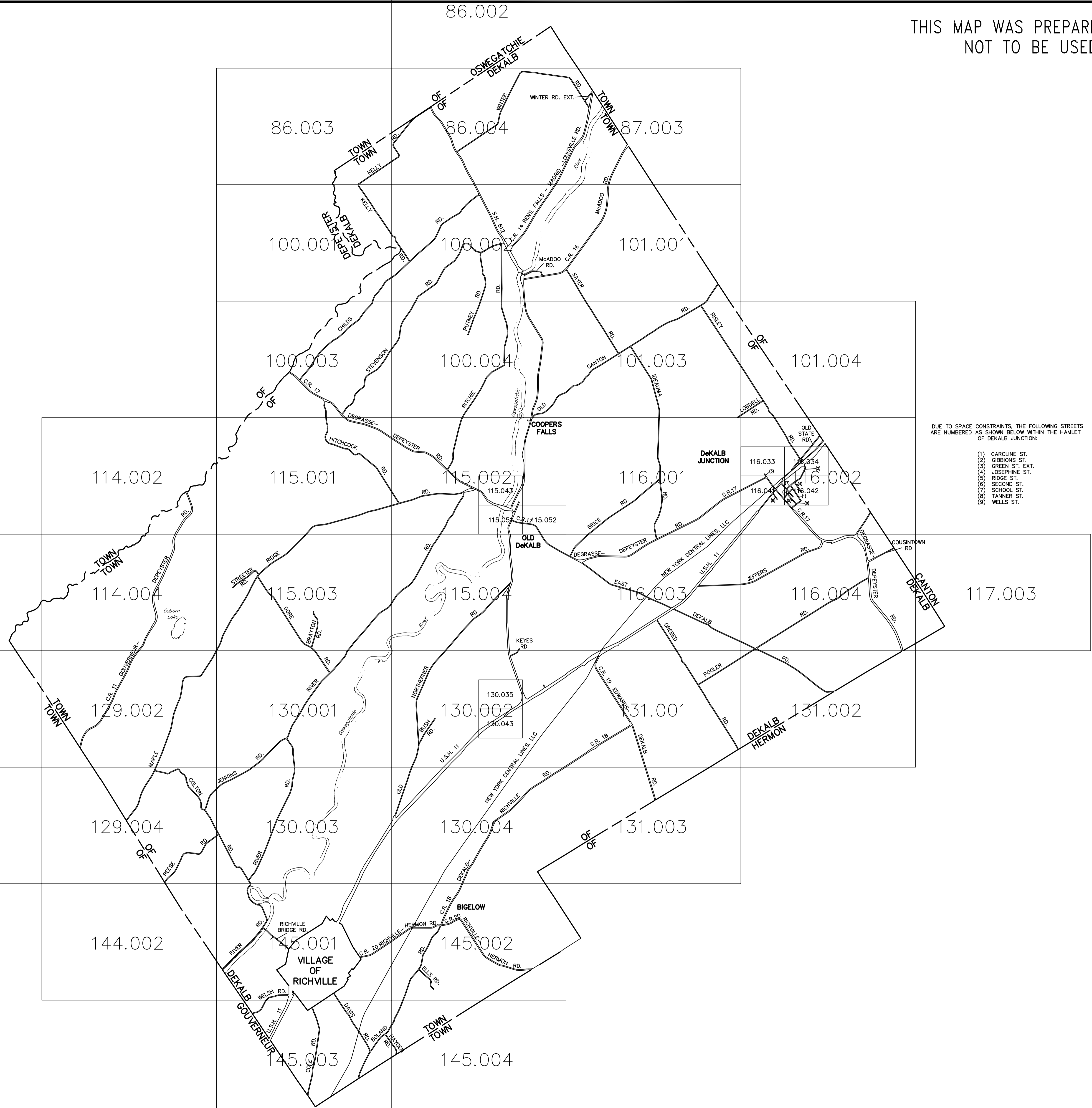


THIS MAP WAS PREPARED FOR TAX PURPOSES ONLY
NOT TO BE USED FOR CONVEYANCE



N 2,096,460
N 2,088,460
N 2,080,460
N 2,072,460
N 2,064,460
N 2,056,460
N 2,048,460
N 2,040,460
N 2,032,460
N 2,024,460



DUE TO SPACE CONSTRAINTS, THE FOLLOWING STREETS ARE NUMBERED AS SHOWN BELOW WITHIN THE HAMLET OF DEKALB JUNCTION:

- (1) CAROLINE ST.
- (2) GIBBONS ST.
- (3) GREEN ST. EXT.
- (4) JOSEPHINE ST.
- (5) RIDGE ST.
- (6) SECOND ST.
- (7) SCHOOL ST.
- (8) TANNER ST.
- (9) WELLS ST.

NOTE: A SERIES OF SQUARE OR RECTANGULAR PARCELS (OF LESS THAN ONE ACRE) HAVING TWO OR FOUR EQUAL SIDES ARE USUALLY DIMENSIONED ON THE FIRST AND LAST LINE OF THE SERIES ONLY. ALL THE OTHER PARALLEL LINES IN THIS SERIES OF LOTS ARE TO BE CONSIDERED AS BEING THE SAME LENGTH.

APPROVED BY NEW YORK BOARD OF EQUALIZATION AND ASSESSMENT

CASE NO. 1375
J TAGGART (AUTHORIZED SIGNATURE)
DATE FEB. 14, 1978

N 2,024,460
E 227,900
E 239,900
E 251,900
E 263,900
E 275,900
E 287,900
E 299,900
E 311,900

NOTICE OF DISCLAIMER
This map represents a compilation of graphical and textual information from deeds and surveys, a planimetric base map, and digital conversions of hand drawn mylar maps. Errors and omissions can occur from each of these sources; each source represents a large number of records and originators of information. As a practical matter, the County does not warrant the accuracy or completeness of the information portrayed. The end user of these maps agrees to accept the data "as is" with the full knowledge that errors and omissions may exist, and to hold harmless the County for any damages that may result from an inappropriate use of these maps.

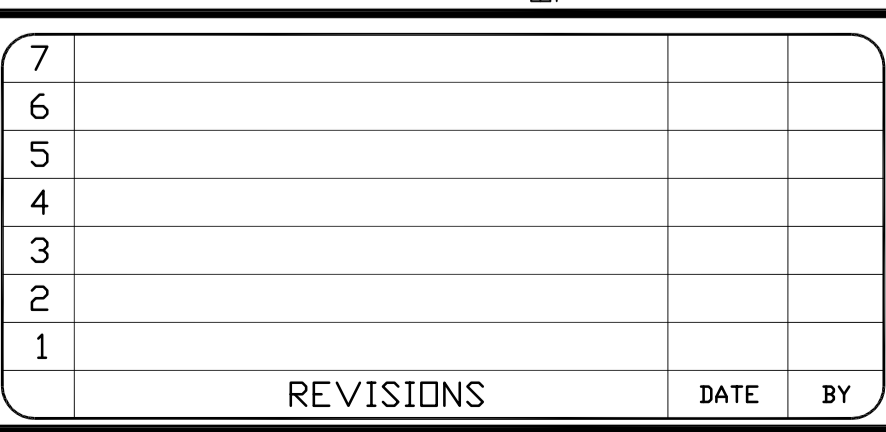
DRAWING LEGEND

International Boundary	Denotes Common Owner	Block No.	27
County Boundary	Railroad	Parcel No.	(10)
Town Boundary	Water	Subdivision Lot No.	112
Village Boundary	Black Limit Line	Deed Dimension	27.3
Property or R/W Line	Special District Line	Scaled Dimension	(27.3)
	Subdivision Lot Line	Deed Area	148.2A(c)
		Calculated Area	

ST. LAWRENCE COUNTY
NEW YORK
REAL PROPERTY
COUNTY OFFICE BUILDING
CANTON, NEW YORK 13617
(315) 379-2272 OFFICE
(315) 229-3222 FAX



REVISIONS	DATE	BY
7		
6		
5		
4		
3		
2		
1		



TOWN OF: **DEKALB**
DISTRICT NO.: **403089**
Date of Completion: 12/29/2009 JIM

SECTION NO.
INDEX
PROPERTY MAP