

NOTE: A SERIES OF SQUARE OR RECTANGULAR PARCELS (OF LESS THAN ONE ACRE) HAVING TWO OR FOUR EQUAL SIDES ARE USUALLY DIMENTIONED ON THE FIRST AND LAST LINE OF THE SERIES ONLY. ALL THE OTHER PARALLEL LINES IN THIS SERIES OF LOTS ARE TO BE CONSIDERED AS BEING THE SAME LENGTH.

APPROVED BY NEW YORK BOARD OF EQUALIZATION AND ASSESSMENT

CASE NO. 1375
J TAGGART (AUTHORIZED SIGNATURE)
DATE FEB. 14, 1978

THIS MAP WAS PREPARED FOR TAX PURPOSES ONLY
NOT TO BE USED FOR CONVEYANCE

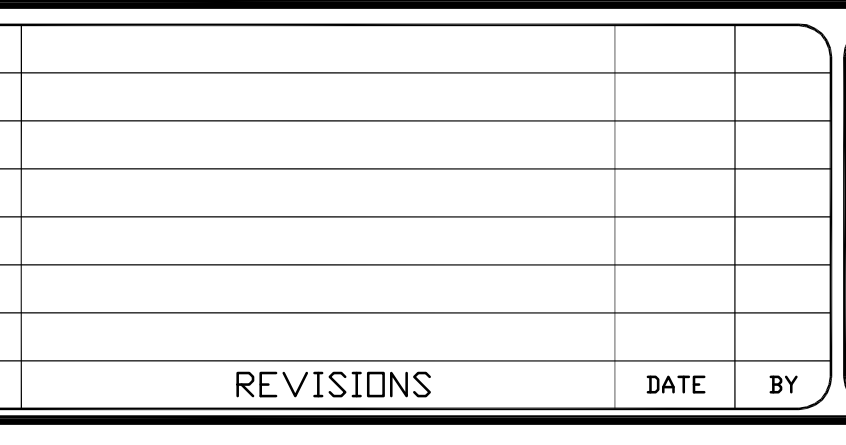
NOTICE OF DISCLAIMER
This map represents a compilation of graphical and textual information from deeds and surveys, a planimetric base map, and digital conversions of hand drawn mylar maps. Errors and omissions can occur from each of these sources; each source represents a large number of records and originators of information. As a practical matter, the County does not warrant the accuracy or completeness of the information portrayed. The end user of these maps agrees to accept the data "as is" with the full knowledge that errors and omissions may exist, and to hold harmless the County for any damages that may result from an inappropriate use of these maps.

DRAWING LEGEND	
International Boundary	— — — — —
County Boundary	— — — — —
Town Boundary	— — — — —
Village Boundary	— — — — —
Property or R/W Line	— — — — —
Denotes Common Owner	Z
Railroad	—+—+—+—+—+—+—+—+—+—
Water	~~~~~
Block Limit Line	— — — — —
Special District Line	— · — · — · — · — · — · —
Subdivision Lot Line	— · — · — · — · — · — · —
Block No.	①
Parcel No.	27
Subdivision Lot No.	(10)
Deed Dimension	112'
Scaled Dimension	27'
Deed Area	(27'-27')
Calculated Area	148.2A(c)

ST. LAWRENCE COUNTY	
NEW YORK	
REAL PROPERTY	
COUNTY OFFICE BUILDING	
CANTON, NEW YORK 13617	
(315) 379-2272 OFFICE	
(315) 229-3222 FAX	



REVISIONS		
7		
6		
5		
4		
3		
2		
1		
	DATE	BY



TOWN OF:	DEPEYSTER
DISTRICT NO.:	403200
Date of Conversion:	10/29/09 JIM

SECTION NO.
INDEX
PROPERTY MAP