

NOTE:  
DUE TO SPACE RESTRAINTS, NOT ALL STREETS AND ROADS APPEAR ON THIS INDEX. THE FOLLOWING IS A LIST OF THESE ROADS/STREETS.

ANN ST.	32.066
ATWATER ST.	32.067
BANK ST.	32.058
CLINTON ST.	32.066
EAST MAIN ST./C.R. 38	32.058, 32.066, 32.067
EASTVIEW HEIGHTS	32.075
ELM CIRCLE	32.059
EVERGREEN AVE.	23.060, 23.068
FAIRLAWN AVE.	23.060, 23.067, 23.068
FURNACE ST./C.R. 38	32.002, 32.058, 32.059
EAST HIGH ST.	32.058, 32.059
HUTCHINS ST.	32.058, 32.066
ISLAND ST.	32.067
MAPLE ST.	32.067, 32.075
MORRIS ST.	32.058, 32.066
NORTH MAIN ST./S.H. 56	32.059, 32.067
NORTHMOOR PARK	23.060
PARK ST.	32.066
RAYMOND ST.	23.075
ROGERS ST.	32.059
SOUTH ST.	32.066
SOUTH MAIN ST./S.H. 56	32.067, 32.075
THOMAS AVE.	32.059
WEST MAIN ST./C.R. 38	32.058
WHEELER DR.	32.004, 32.066, 32.067

NOTE:  
A SERIES OF SQUARE OR RECTANGULAR PARCELS (OF LESS THAN ONE ACRE) HAVING TWO OR FOUR EQUAL SIDES ARE USUALLY DIMENSIONED ON THE FIRST AND LAST LINE OF THE SERIES ONLY. ALL THE OTHER PARALLEL LINES IN THIS SERIES OF LOTS ARE TO BE CONSIDERED TO BE THE SAME LENGTH.

APPROVED BY NEW YORK BOARD OF EQUALIZATION AND ASSESSMENT

CASE NO. 1487 J YAGGART (AUTHORIZED SIGNATURE)  
DATE DECEMBER 5, 1978

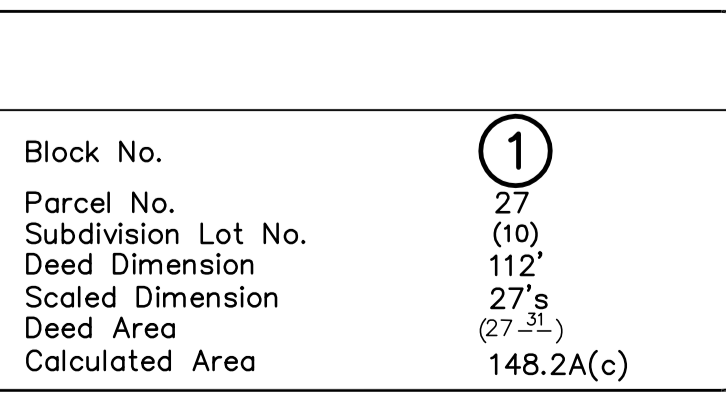
THIS MAP WAS PREPARED FOR TAX PURPOSES ONLY  
NOT TO BE USED FOR CONVEYANCE

**NOTICE OF DISCLAIMER**  
This map represents a compilation of graphical and textual information from deeds and surveys, a planimetric base map, and digital conversions of hand drawn maps. Errors and omissions can occur from each of these sources; each source represents a large number of records and originators of information. As a practical matter, the County does not warrant the accuracy or completeness of the information portrayed. The end user of these maps agrees to accept the data "as is" with the full knowledge that errors and omissions may exist, and to hold harmless the County for any damages that may result from an inappropriate use of these maps.

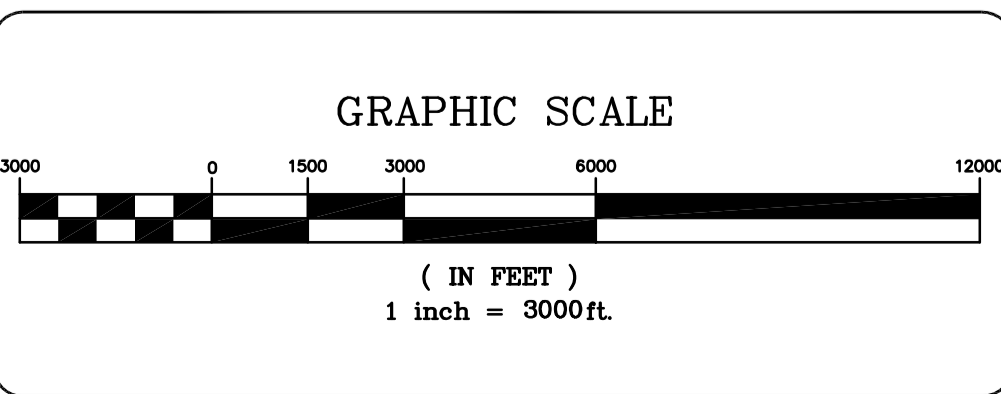
**DRAWING LEGEND**

International Boundary	— — — — —
County Boundary	— — — — —
Town Boundary	— — — — —
Village Boundary	— — — — —
Property or R/W Line	— — — — —
Denotes Common Owner	— — — — —
Railroad	— — — — —
Water	— — — — —
Black Limit Line	— — — — —
Special District Line	— — — — —
Subdivision Lot Line	— — — — —

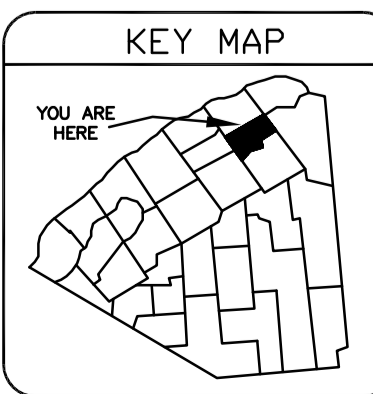
Block No.	①
Parcel No.	27
Subdivision Lot No.	(10)
Deed Dimension	112'
Scaled Dimension	27' 3"
Deed Area	(27' 3")
Calculated Area	148.2A(c)



**ST. LAWRENCE COUNTY**  
**NEW YORK**  
**REAL PROPERTY**  
COUNTY OFFICE BUILDING  
CANTON, NEW YORK 13617  
(315) 379-2272 OFFICE  
(315) 229-3222 FAX



7			
6			
5			
4			
3			
2			
1			
	REVISIONS	DATE	BY



TOWN OF: **NORFOLK**  
DISTRICT NO.: **406289**  
Date of Conversion: 6/1/2009 LDC

SECTION NO.  
**INDEX**  
PROPERTY MAP