

UNLESS DRAWN OTHERWISE, ALL PROPERTIES ARE WITHIN THE FOLLOWING DISTRICTS:

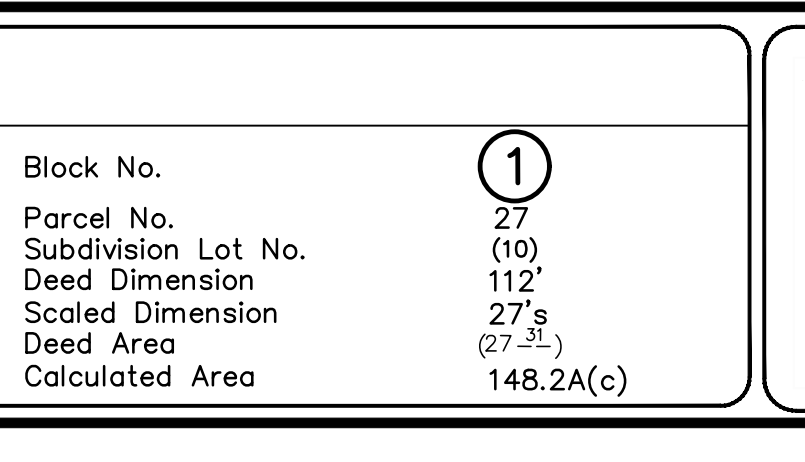
SCHOOL	405001	WATER	30002
FIRE	70004	SEWER	30002
LIGHT	13000	AGRICULTURAL	

THIS MAP WAS PREPARED FOR TAX PURPOSES ONLY  
NOT TO BE USED FOR CONVEYANCE

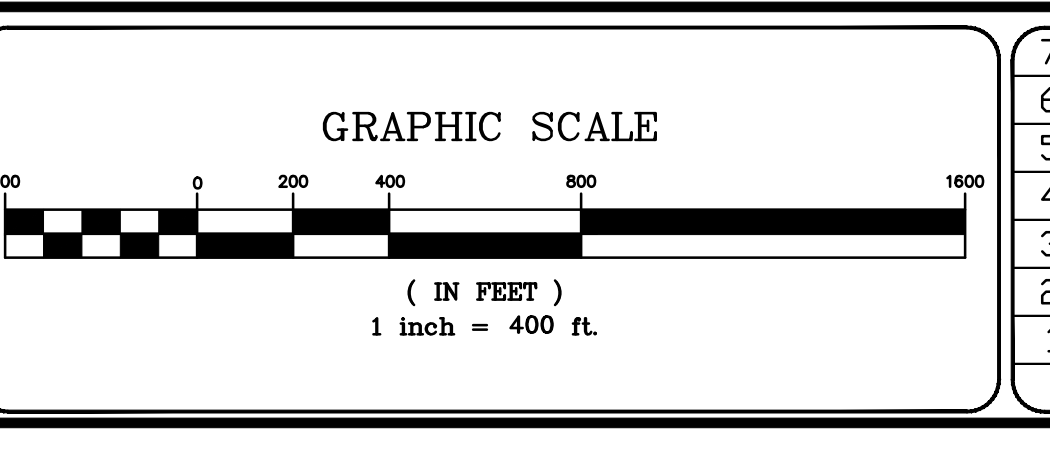
**NOTICE OF DISCLAIMER**

This map represents a compilation of graphical and textual information from deeds and surveys, a planimetric base map, and digital conversions of hand drawn mylar maps. Errors and omissions can occur from each of these sources; each source represents a large number of records and originators of information. As a practical matter, the County does not warrant the accuracy or completeness of the information portrayed. The use of these maps agrees to accept the data "as is" with the full knowledge that errors and omissions may exist, and to hold harmless the County for any damages that may result from an inappropriate use of these maps.

DRAWING LEGEND	
International Boundary	— — — — —
County Boundary	— — — — —
Town Boundary	— — — — —
Village Boundary	— — — — —
Property or R/W Line	— — — — —
Denotes Common Owner Railroad	— + — + — + — + — + —
Water	(Wavy line symbol)
Block Limit Line	— — — — —
Special District Line	— — — — —
Subdivision Lot Line	— — — — —
Block No.	①
Parcel No.	27
Subdivision Lot No.	(10)
Deed Dimension	112'
Scaled Dimension	27'
Deed Area	(27.3)
Calculated Area	148.2A(c)



**ST. LAWRENCE COUNTY**  
**NEW YORK**  
**REAL PROPERTY**  
COUNTY OFFICE BUILDING  
CANTON, NEW YORK 13617  
(315) 379-2272 OFFICE  
(315) 229-3222 FAX



NO.	REVISIONS	DATE	BY
7			
6			
5			
4			
3			
2			
1			

KEY MAP		
40.002	41.001	41.002
40.004	41.003	41.004
51.002	52.001	
51.004	52.003	

TOWN OF: **MADRID**  
DISTRICT NO.: **405600**  
Date of Conversion: 11/01/09 LDC

SECTION NO.  
**41.003**  
PROPERTY MAP