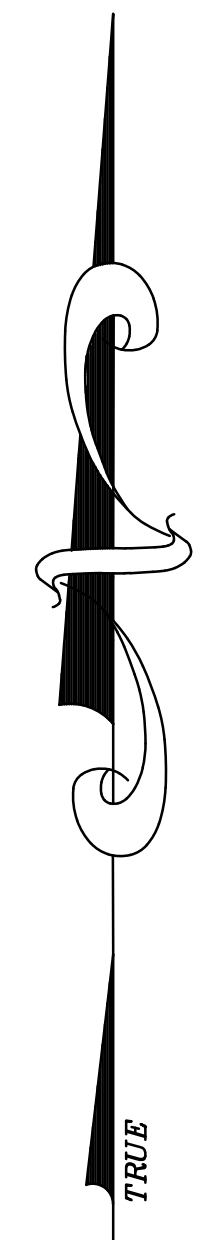


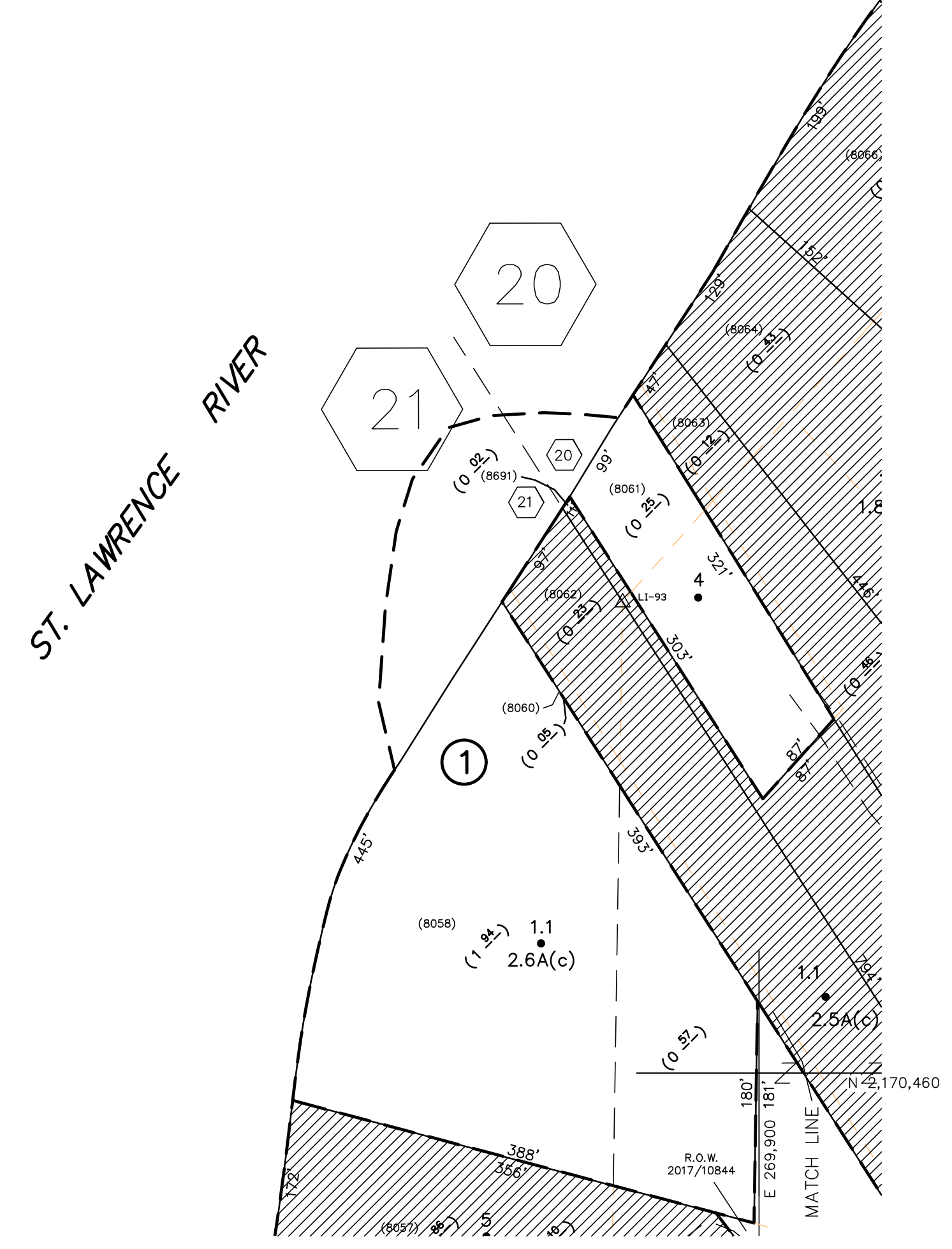
N 2,172,460
E 266,800

E 266,800
N 2,172,460

PROVINCE
OF LISBON,



N 2,170,460
E 266,800



UNLESS DRAWN OTHERWISE, ALL PROPERTIES ARE WITHIN THE FOLLOWING DISTRICTS:

SCHOOL	405002	WATER	
FIRE	75001	SEWER	
LIGHT		AGRICULTURAL	

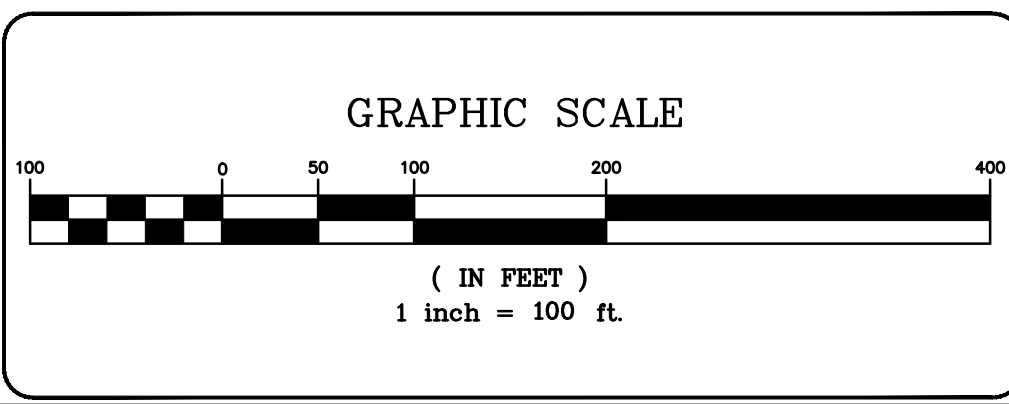
NOTICE OF DISCLAIMER
This map represents a compilation of graphical and textual information from deeds and surveys, a planimetric base map, and digital conversions of hand drawn mylar maps. Errors and omissions can occur from each of these sources; each source represents a large number of records and originators of information. As a practical matter, the County does not warrant the accuracy or completeness of the information portrayed. The end user of these maps agrees to accept the data "as is" with the full knowledge that errors and omissions may exist, and to hold harmless the County for any damages that may result from an inappropriate use of these maps.

DRAWING LEGEND

International Boundary	— — — — —
County Boundary	— — — — —
Town Boundary	— — — — —
Village Boundary	— — — — —
Property or R/W Line	— — — — —

Denotes Common Owner	Z
Railroad	— — — — —
Water	— — — — —
Block Limit Line	— — — — —
Special District Line	— — — — —
Subdivision Lot Line	— — — — —

Block No.	①
Parcel No.	27
Subdivision Lot No.	(10)
Deed Dimension	112'
Scaled Dimension	27'
Deed Area	(27.3 ₁)
Calculated Area	148.2A(c)



7			
6			
5			
4			
3			
2			
1			
	REVISIONS	DATE	BY

KEY MAP

TOWN OF:	LISBON
DISTRICT NO.:	405000
Date of Conversion:	1/20/2010 MRP

SECTION NO.	28.074
PROPERTY MAP	

THIS MAP WAS PREPARED FOR TAX PURPOSES ONLY
NOT TO BE USED FOR CONVEYANCE