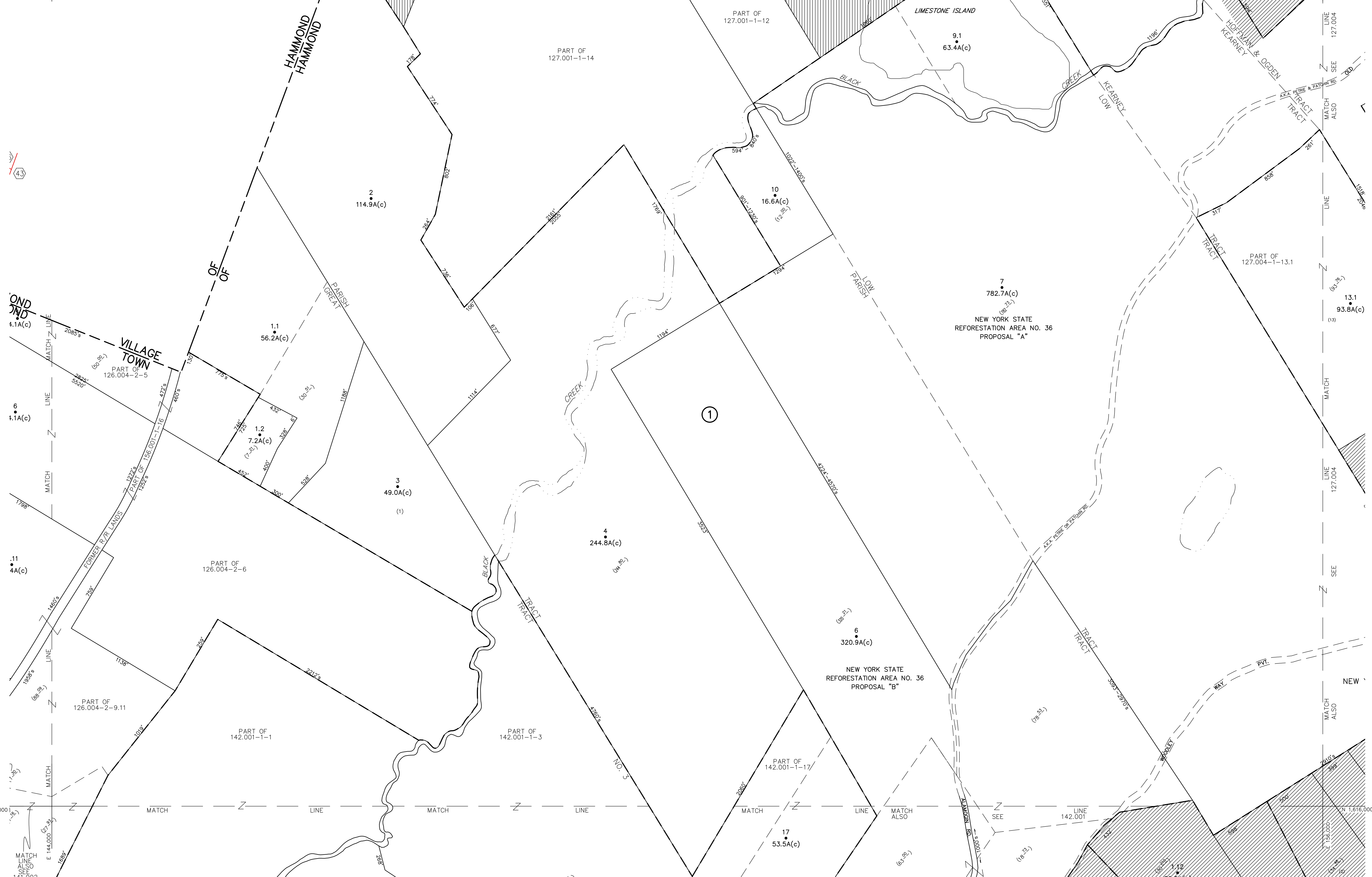


150'
x50'x161'
N 1,624,000
E 144,000



UNLESS DRAWN OTHERWISE, ALL PROPERTIES ARE WITHIN THE FOLLOWING DISTRICTS:

SCHOOL	454201	WATER	
FIRE	7507	SEWER	
LIGHT		AGRICULTURAL	

THIS MAP WAS PREPARED FOR TAX PURPOSES ONLY
NOT TO BE USED FOR CONVEYANCE

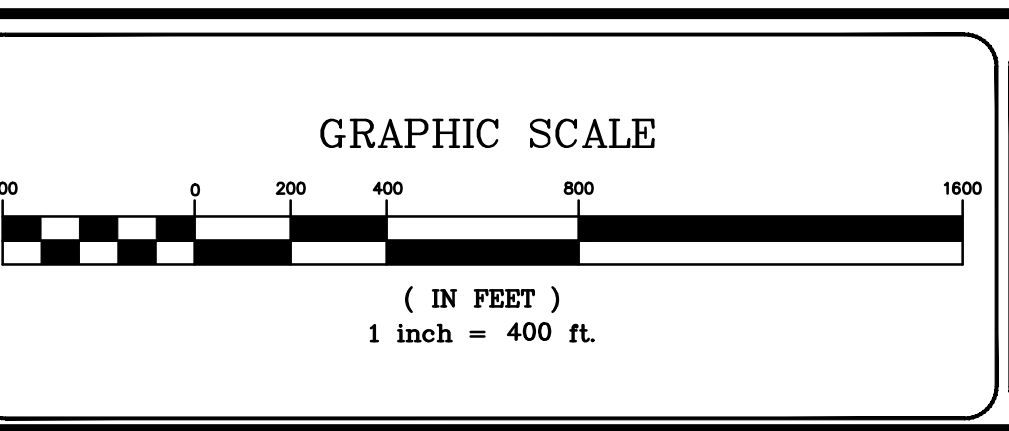
NOTICE OF DISCLAIMER
This map represents a compilation of graphical and textual information from deeds and surveys, a planimetric base map, and digital conversions of hand drawn maps. Errors and omissions can occur from each of these sources; each source represents a large number of records and originators of information. As a practical matter, the County does not warrant the accuracy or completeness of the information portrayed. The end user of these maps agrees to accept the data "as is" with the full knowledge that errors and omissions may exist, and to hold harmless the County for any damages that may result from an inappropriate use of these maps.

DRAWING LEGEND

International Boundary	— — — — —	Denotes Common Owner Railroad	— — — — —
County Boundary	— — — — —	Water	~~~~~
Town Boundary	— — — — —	Black Limit Line	— — — — —
Village Boundary	— — — — —	Special District Line	— — — — —
Property or R/W Line	— — — — —	Subdivision Lot Line	— — — — —

Block No.	①
Parcel No.	27
Subdivision Lot No.	(10)
Deed Dimension	112'
Scaled Dimension	27'±
Deed Area	(27.31)
Calculated Area	148.2A(c)

ST. LAWRENCE COUNTY
NEW YORK
REAL PROPERTY
COUNTY OFFICE BUILDING
CANTON, NEW YORK 13617
(315) 379-2272 OFFICE
(315) 229-3222 FAX



NO.	REVISIONS	DATE	BY
7			
6			
5			
4			
3			
2			
1			

KEY MAP

126.004	127.001	127.002
126.004	127.001	127.004
148.002	148.001	148.002

TOWN OF: **HAMMOND**
DISTRICT NO.: **404289**
Date of Conversion: 01/09/09 JIM

SECTION NO.
127.003
PROPERTY MAP