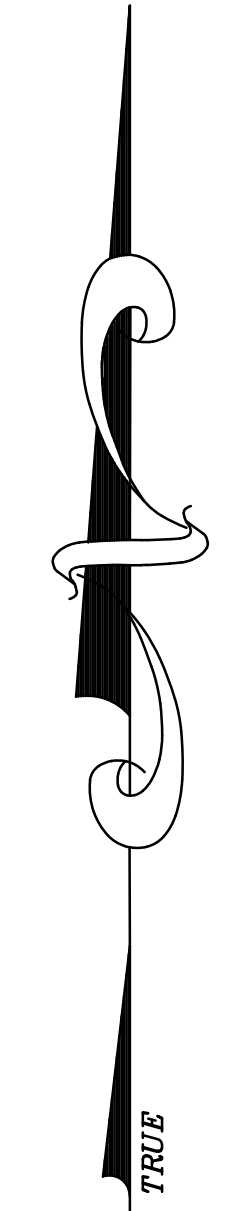
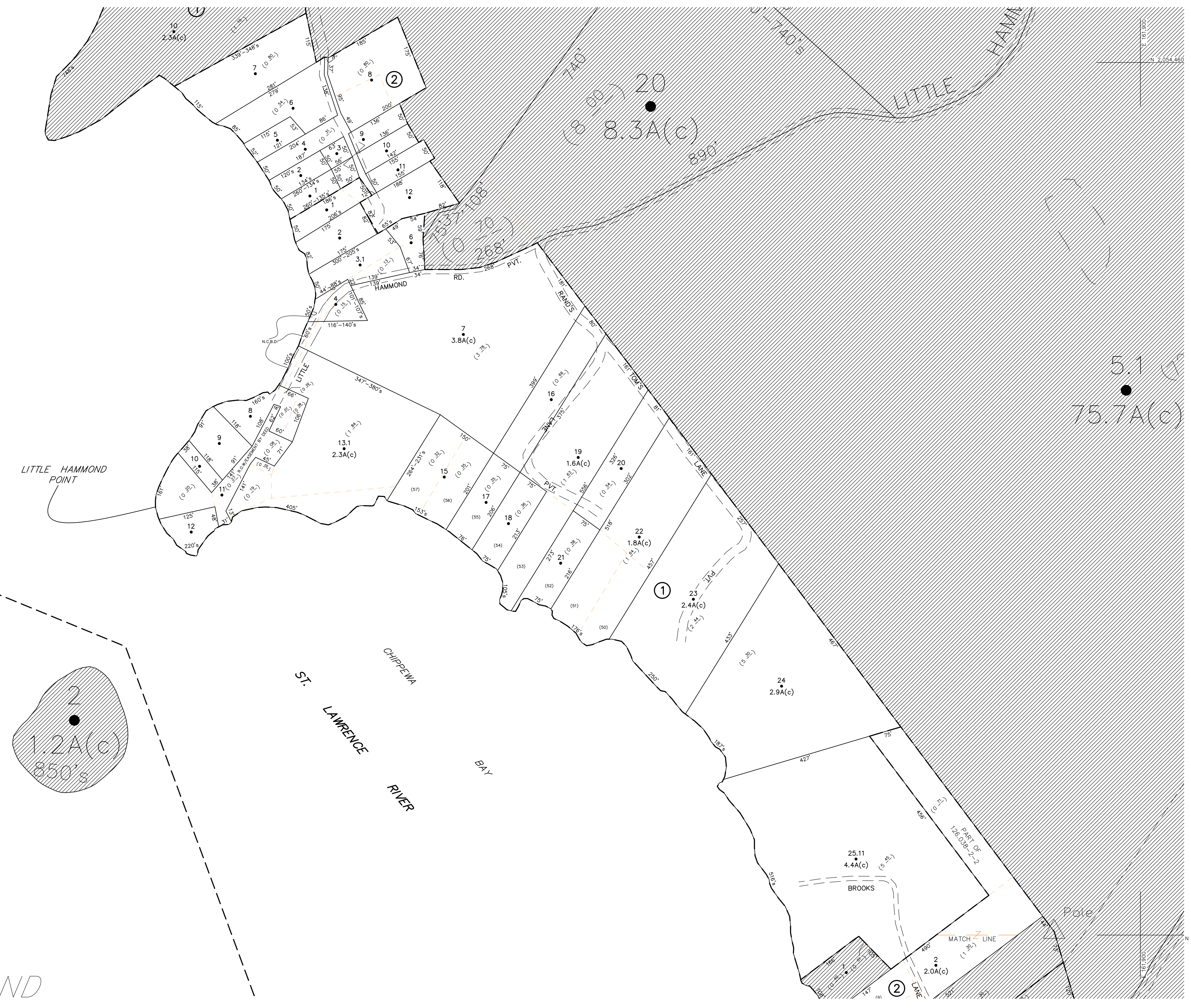


N 2,054,460
E 1,052,900

N 2,054,460
E 1,052,900

N 2,052,460
E 1,052,900

LAKEALL ISLAND



UNLESS DRAWN OTHERWISE, ALL PROPERTIES ARE WITHIN THE FOLLOWING DISTRICTS :

SCHOOL	454201	WATER	
FIRE	7507	SEWER	
LIGHT		AGRICULTURAL	

THIS MAP WAS PREPARED FOR TAX PURPOSES ONLY
NOT TO BE USED FOR CONVEYANCE

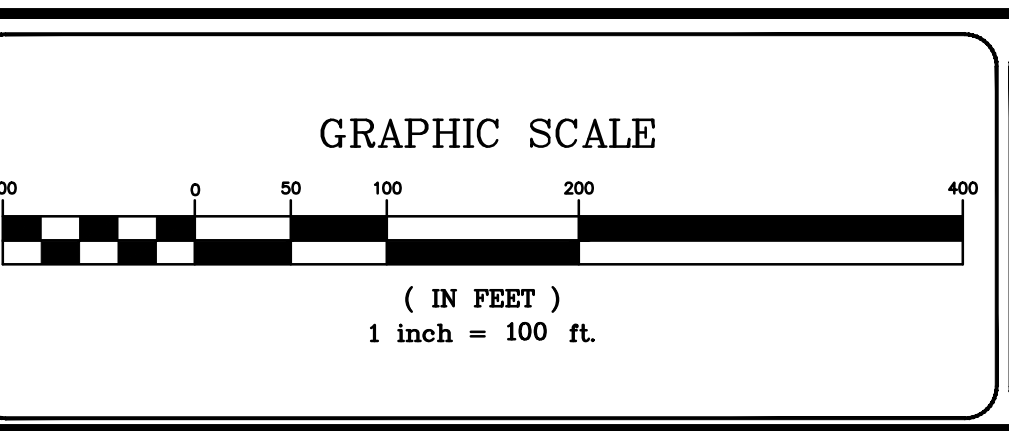
NOTICE OF DISCLAIMER
This map represents a compilation of graphical and textual information from deeds and surveys, a planimetric base map, and digital conversions of hand drawn mylar maps. Errors and omissions can occur from each of these sources; each source represents a large number of records and originators of information. As a practical matter, the County does not warrant the accuracy or completeness of the information portrayed. The end user of these maps agrees to accept the data "as is" with the full knowledge that errors and omissions may exist, and to hold harmless the County for any damages that may result from an inappropriate use of these maps.

DRAWING LEGEND

International Boundary	— — — — —	Denotes Common Owner Railroad	— — — — —
County Boundary	— — — — —	Water	~~~~~
Town Boundary	— — — — —	Black Limit Line	— — — — —
Village Boundary	— — — — —	Special District Line	— — — — —
Property or R/W Line	— — — — —	Subdivision Lot Line	— — — — —

Block No.	①
Parcel No.	27
Subdivision Lot No.	(10)
Deed Dimension	112'
Scaled Dimension	27'
Deed Area	(27.25)
Calculated Area	148.2A(c)

ST. LAWRENCE COUNTY
NEW YORK
REAL PROPERTY
COUNTY OFFICE BUILDING
CANTON, NEW YORK 13617
(315) 379-2272 OFFICE
(315) 229-3222 FAX



REVISIONS	DATE	BY
7		
6		
5		
4		
3		
2		
1		

KEY MAP

111.077	111.078
126.001	126.002
126.003	126.004
126.005	126.006

TOWN OF: **HAMMOND**
DISTRICT NO.: **404289**
Date of Conversion: 01/07/09 JIM

SECTION NO.
126.030
PROPERTY MAP