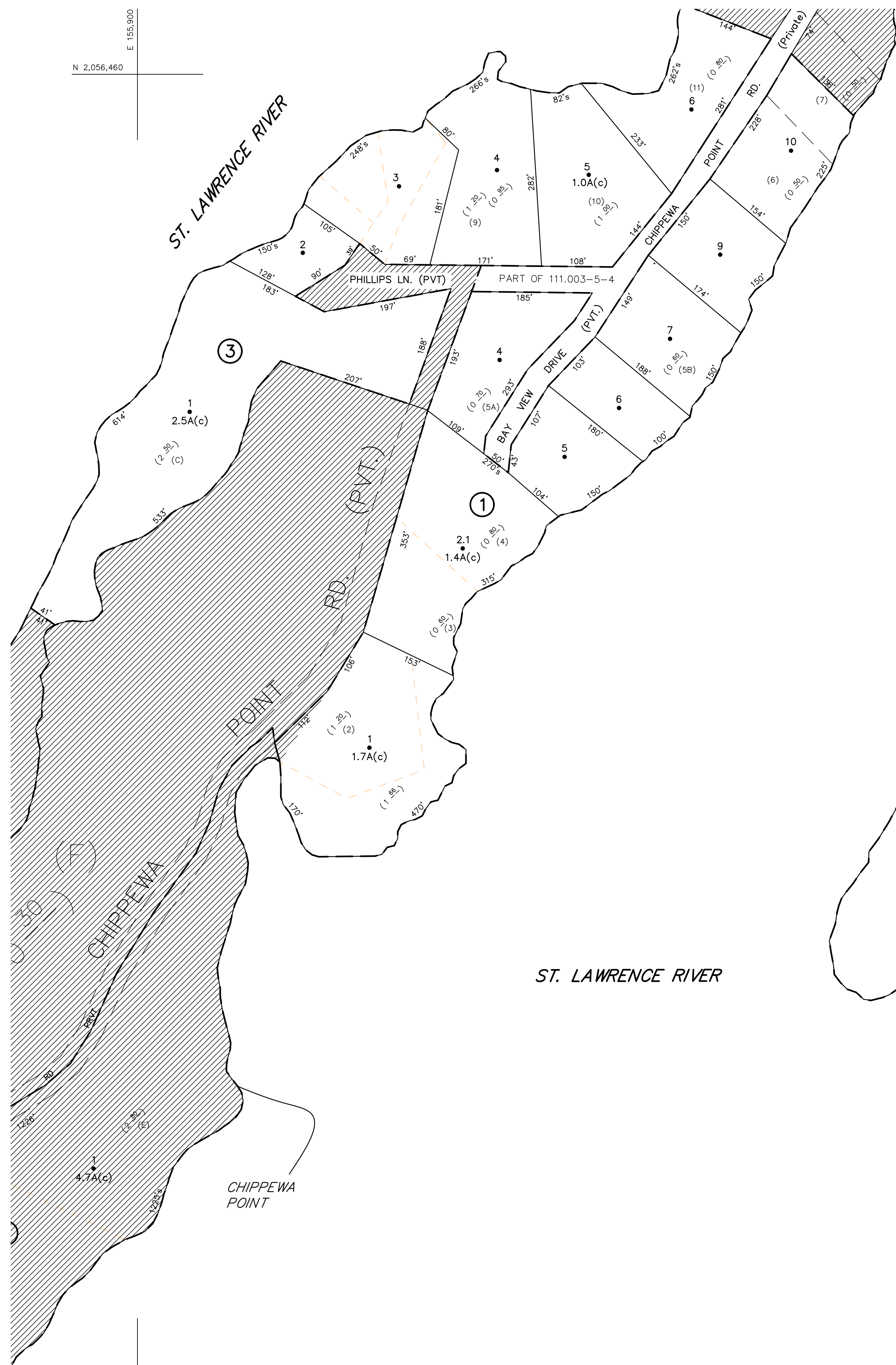


N 2,056,460  
E 126,800



N 2,054,460  
E 126,800

UNLESS DRAWN OTHERWISE, ALL PROPERTIES ARE WITHIN THE FOLLOWING DISTRICTS :

SCHOOL	454201	WATER	
FIRE	7507	SEWER	
LIGHT		AGRICULTURAL	

**NOTICE OF DISCLAIMER**

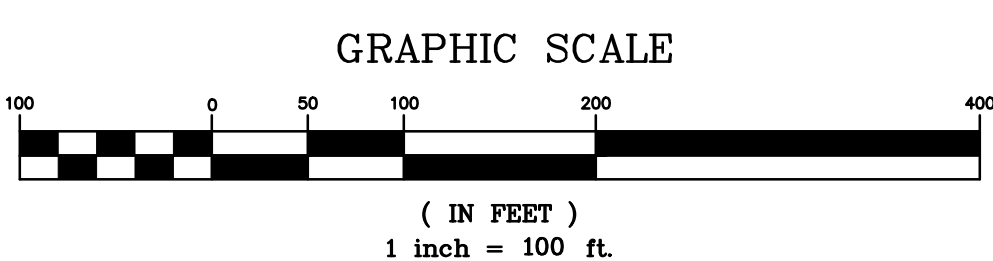
This map represents a compilation of graphical and textual information from deeds and surveys, a planimetric base map, and digital conversions of hand drawn map. Errors and omissions can occur from each of these sources; each source represents a large number of records and originators of information. As a practical matter, the County does not warrant the accuracy or completeness of the information portrayed. The end user of these maps agrees to accept the data "as is" with the full knowledge that errors and omissions may exist, and to hold harmless the County for any damages that may result from an inappropriate use of these maps.

**DRAWING LEGEND**

International Boundary	— — — — —	Denotes Common Owner	①	Block No.	27
County Boundary	— — — — —	Railroad	— — — — —	Subdivision Lot No.	112
Town Boundary	— — — — —	Water	— — — — —	Deed Dimension	27'
Village Boundary	— — — — —	Black Limit Line	— — — — —	Scaled Dimension	(27'-31.5')
Property or R/W Line	— — — — —	Special District Line	— — — — —	Deed Area	148.2A(c)
		Subdivision Lot Line	— — — — —	Calculated Area	



ST. LAWRENCE COUNTY  
NEW YORK  
REAL PROPERTY  
COUNTY OFFICE BUILDING  
CANTON, NEW YORK 13617  
(315) 379-2272 OFFICE  
(315) 229-3222 FAX

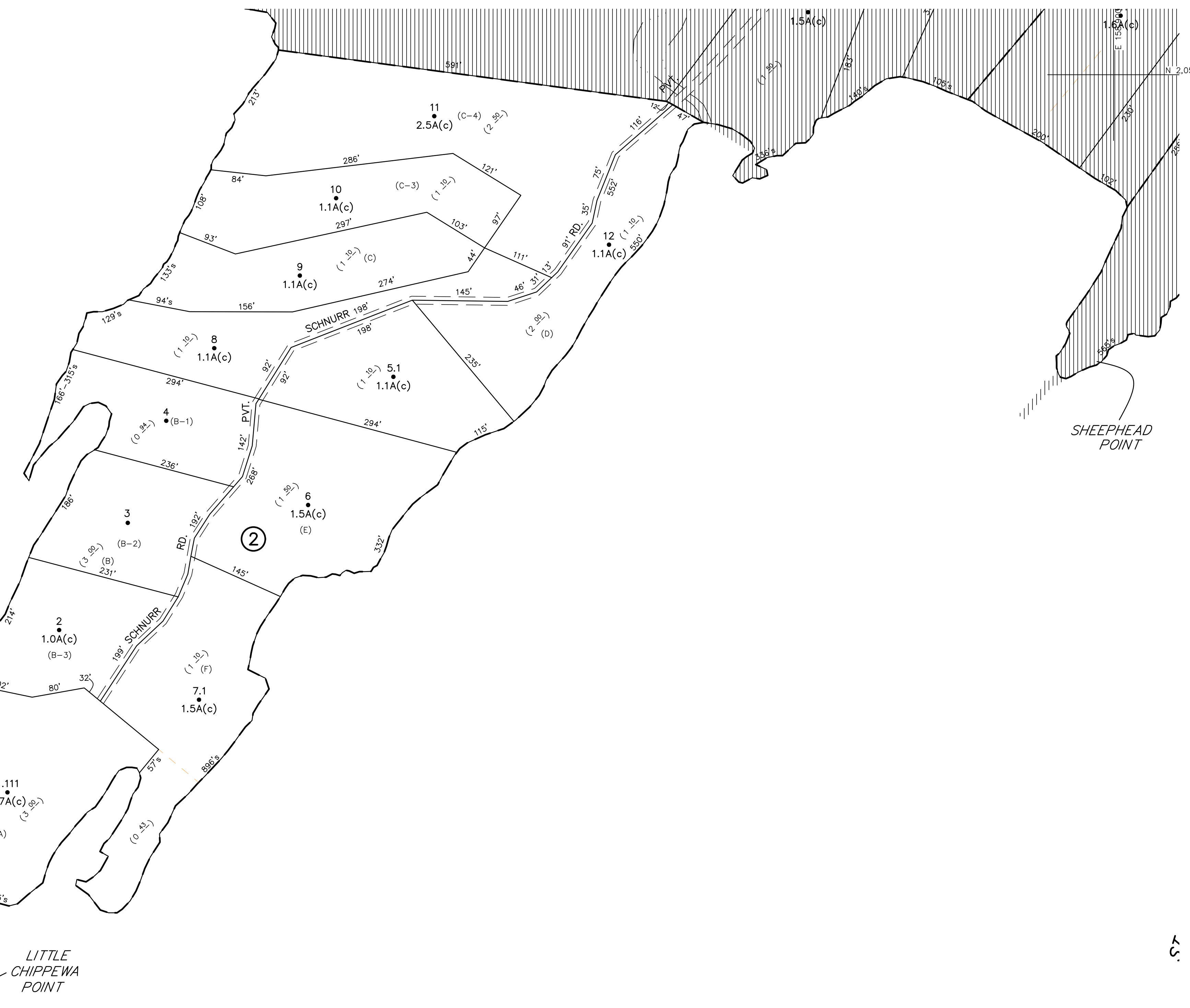


REVISIONS	DATE	BY

KEY MAP	
110.004	111.003
112.000	113.000
114.000	115.000
116.000	117.000
118.000	119.000
120.000	121.000
122.000	123.000
124.000	125.002
126.001	127.000
128.000	129.000

TOWN OF:	<b>HAMMOND</b>
DISTRICT NO.:	<b>404289</b>
Date of Conversion:	01/07/09 JIM

SECTION NO.	126.021
PROPERTY MAP	



N 2,054,460  
E 126,800

THIS MAP WAS PREPARED FOR TAX PURPOSES ONLY  
NOT TO BE USED FOR CONVEYANCE