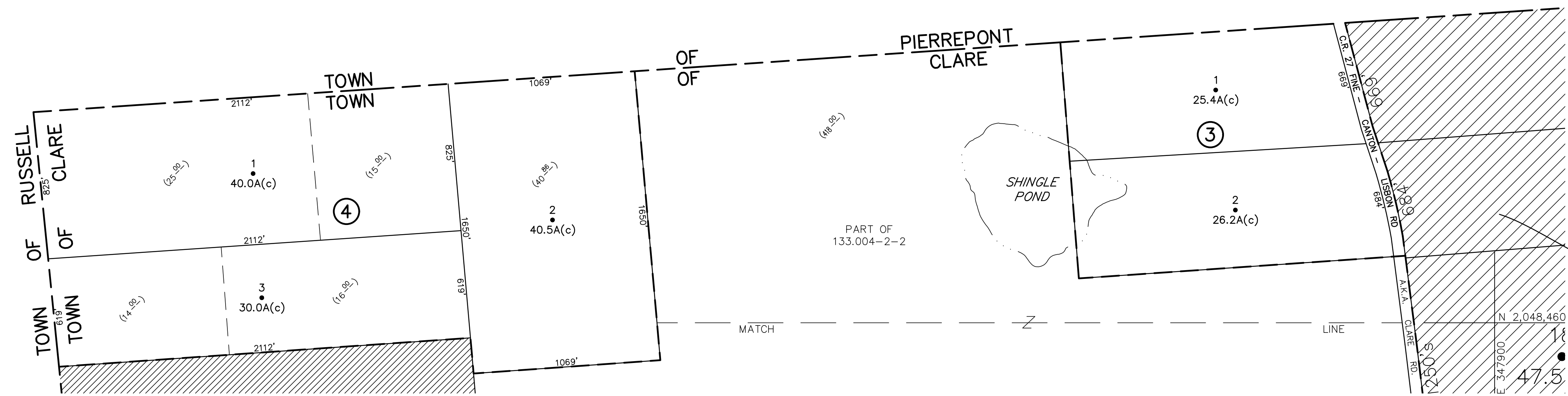


N 2,056,460  
E 335,900

E 347,900  
N 2,056,460



N 2,048,460  
E 335,900

UNLESS DRAWN OTHERWISE, ALL PROPERTIES ARE WITHIN THE FOLLOWING DISTRICTS:

SCHOOL	403401	WATER	
FIRE	75505	SEWER	
LIGHT		AGRICULTURAL	

THIS MAP WAS PREPARED FOR TAX PURPOSES ONLY  
NOT TO BE USED FOR CONVEYANCE

**NOTICE OF DISCLAIMER**

This map represents a compilation of graphical and textual information from deeds and surveys, a planimetric base map, and digital conversions of hand drawn mylar maps. Errors and omissions can occur from each of these sources; each source represents a large number of records and originators of information. As a practical matter, the County does not warrant the accuracy or completeness of the information portrayed. The end user of these maps agrees to accept the data "as is" with the full knowledge that errors and omissions may exist, and to hold harmless the County for any damages that may result from an inappropriate use of these maps.

**DRAWING LEGEND**

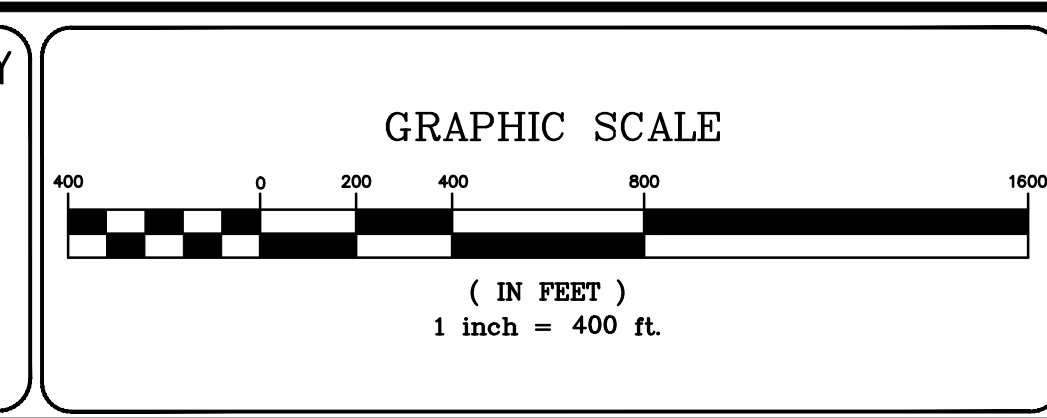
International Boundary	— — — — —
County Boundary	— — — — —
Town Boundary	— — — — —
Village Boundary	— — — — —
Property or R/W Line	— — — — —

Denotes Common Owner	Z
Railroad	— — — — —
Water	— — — — —
Block Limit Line	— — — — —
Special District Line	— — — — —
Subdivision Lot Line	— — — — —

Block No.	①
Parcel No.	27
Subdivision Lot No.	(10)
Deed Dimension	112'
Scaled Dimension	27 <sup>8</sup> / <sub>32</sub>
Deed Area	(27 <sup>8</sup> / <sub>32</sub> ) <sup>2</sup>
Calculated Area	148.2A(c)

**ST. LAWRENCE COUNTY**  
NEW YORK  
REAL PROPERTY

COUNTY OFFICE BUILDING  
CANTON, NEW YORK 13617  
(315) 379-2272 OFFICE  
(315) 229-3222 FAX



7			
6			
5			
4			
3			
2			
1			
	REVISIONS	DATE	BY

**KEY MAP**

TOWN OF: CLARE  
DISTRICT NO.: 402400  
DATE OF CONVERSION: 01/03/07 JIM

SECTION NO.  
**133.002**  
PROPERTY MAP