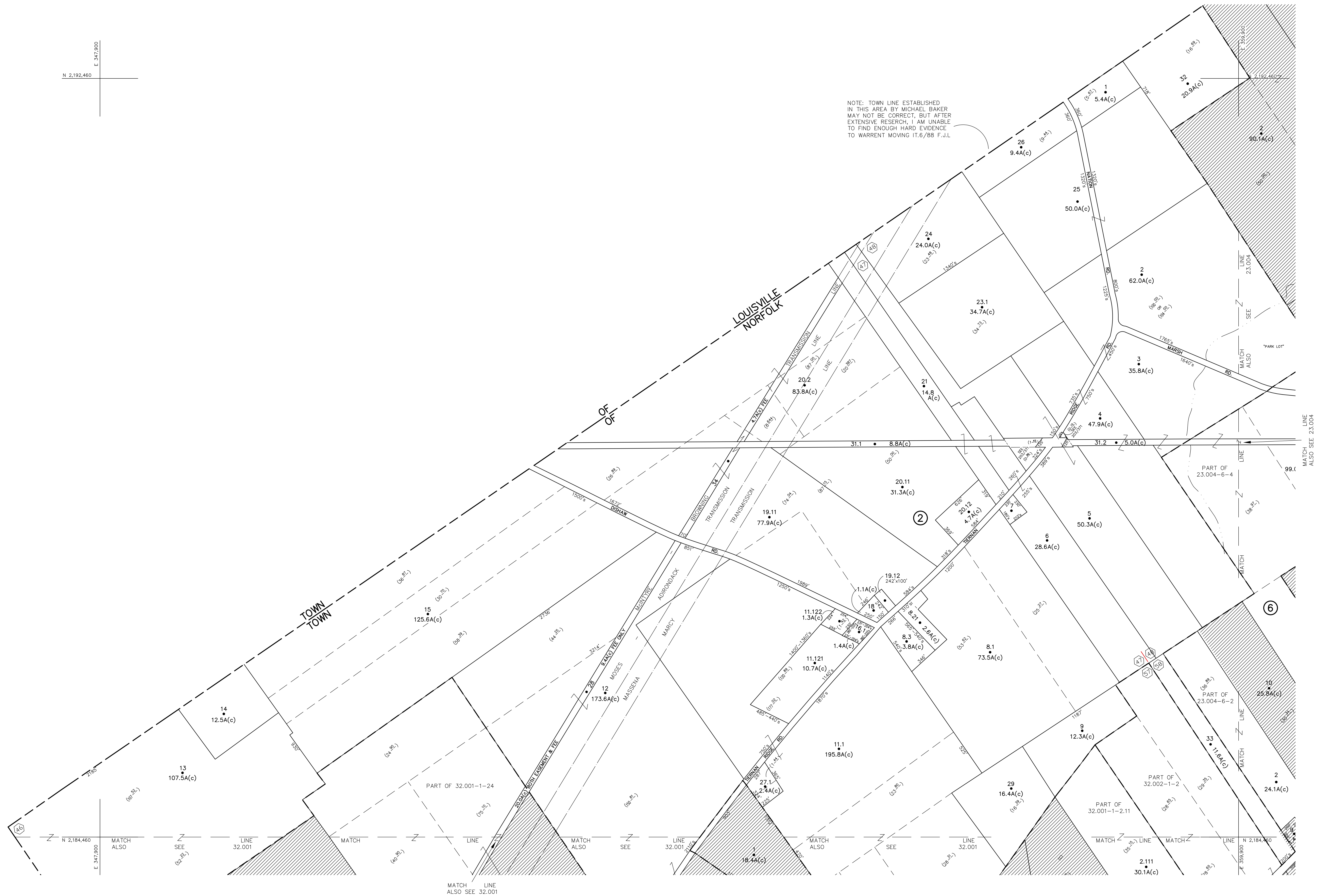


N 2,192,460
E 3,417,900



NOTE: TOWN LINE ESTABLISHED IN THIS AREA BY MICHAEL BAKER MAY NOT BE CORRECT, BUT AFTER EXTENSIVE RESEARCH, I AM UNABLE TO FIND ENOUGH HARD EVIDENCE TO WARRENT MOVING IT. 6/88 F.J.L.



UNLESS DRAWN OTHERWISE, ALL PROPERTIES ARE WITHIN THE FOLLOWING DISTRICTS:

SCHOOL	406201	WATER	
FIRE	70028	SEWER	
LIGHT		AGRICULTURAL	

THIS MAP WAS PREPARED FOR TAX PURPOSES ONLY
NOT TO BE USED FOR CONVEYANCE

NOTICE OF DISCLAIMER
This map represents a compilation of graphical and textual information from deeds and surveys, a planimetric base map, and digital conversions of hand drawn mylar maps. Errors and omissions can occur from each of these sources; each source represents a large number of records and originators of information. As a practical matter, the County does not warrant the accuracy or completeness of the information portrayed. The end user of these maps agrees to accept the data "as is" with the full knowledge that errors and omissions may exist, and to hold harmless the County for any damages that may result from an inappropriate use of these maps.

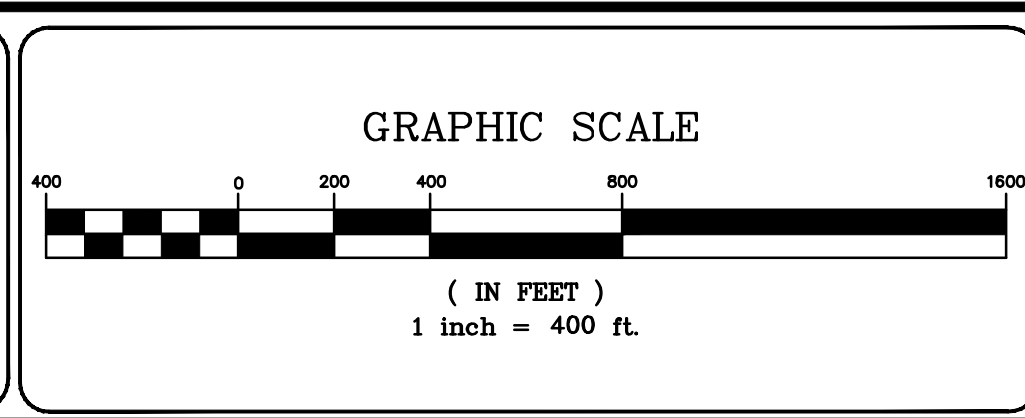
DRAWING LEGEND

International Boundary	— — — — —
County Boundary	— — — — —
Town Boundary	- - - - -
Village Boundary	— · — · — · —
Property or R/W Line	— — — — —

Denotes Common Owner
Railroad
Water
Block Limit Line
Special District Line
Subdivision Lot Line

Block No.	①
Parcel No.	27
Subdivision Lot No.	(10)
Deed Dimension	112'
Scaled Dimension	27'
Deed Area	(27.3)
Calculated Area	148.2A(c)

ST. LAWRENCE COUNTY
NEW YORK
REAL PROPERTY
COUNTY OFFICE BUILDING
CANTON, NEW YORK 13617
(315) 379-2272 OFFICE
(315) 229-3222 FAX



REVISIONS	DATE	BY
7		
6		
5		
4		
3		
2		
1		

KEY MAP

23.002	24.001
23.003	24.003
32.001	32.002
32.003	33.001
32.002	33.003

TOWN OF: NORFOLK
DISTRICT NO.: 406289
Date of Conversion: 6/1/2009 LDC

SECTION NO.
23.003
PROPERTY MAP