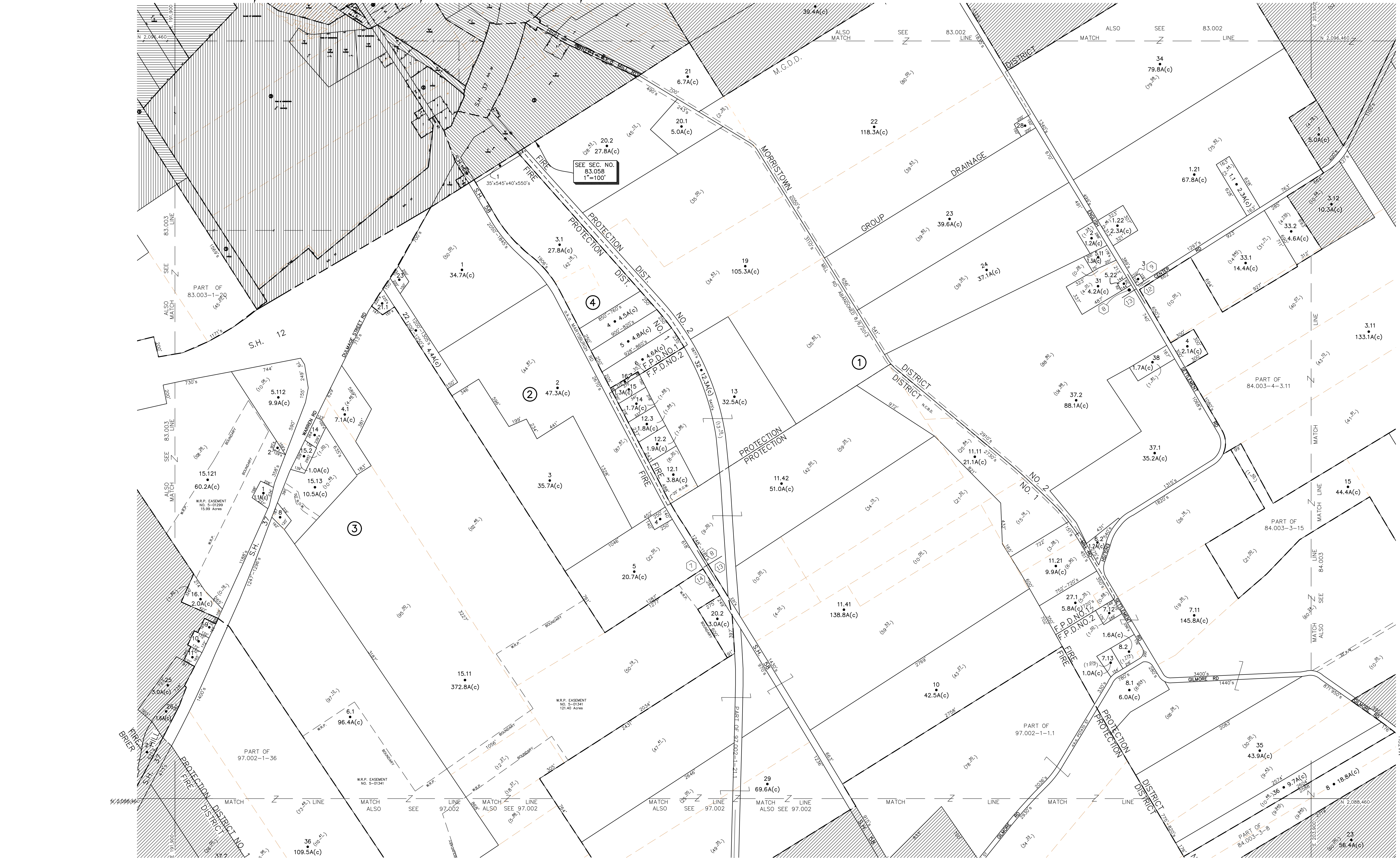
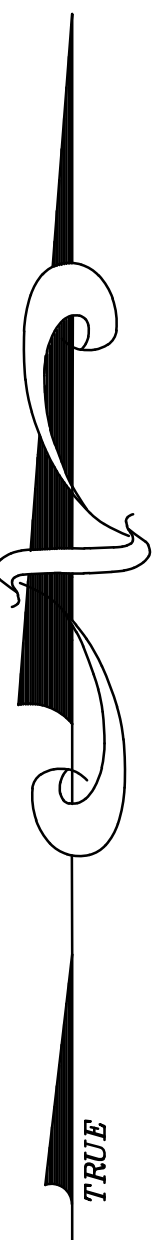


SEE SEC. NO. 83.048 1"=100'
 SEE SEC. NO. 83.057 1"=100'
 SEE SEC. NO. 83.049 1"=100'
 SEE SEC. NO. 83.050 1"=100'



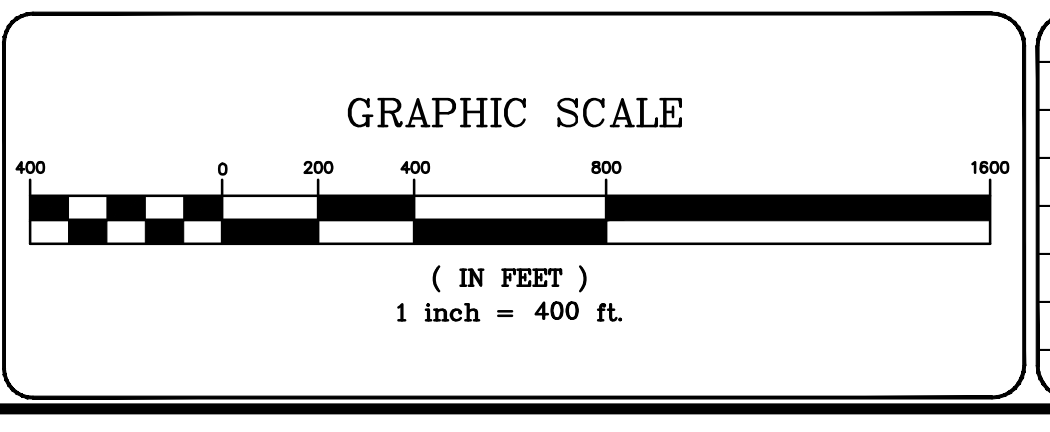
UNLESS DRAWN OTHERWISE, ALL PROPERTIES ARE WITHIN THE FOLLOWING DISTRICTS:
 SCHOOL 400001 WATER
 FIRE PROTECTORS/DISTRICTER
 LIGHT AGRICULTURAL

THIS MAP WAS PREPARED FOR TAX PURPOSES ONLY
 NOT TO BE USED FOR CONVEYANCE

NOTICE OF DISCLAIMER
 This map represents a compilation of graphical and textual information from deeds and surveys, a planimetric base map, and digital conversions of hand drawn mylar maps. Errors and omissions can occur from each of these sources; each source represents a large number of records and originators of information. As a practical matter, the County does not warrant the accuracy or completeness of the information portrayed. The end user of these maps agrees to accept the data "as is" with the full knowledge that errors and omissions may exist, and to hold harmless the County for any damages that may result from an inappropriate use of these maps.

DRAWING LEGEND	
International Boundary	— — — — —
Town Boundary	- - - - -
Village Boundary	- · - · -
Property or R/W Line	—————
Denotes Common Owner	Z
Railroad	▬▬▬▬▬▬▬
Water	~~~~~
Block Limit Line	— · — · —
Special District Line	— = — = —
Subdivision Lot Line	- - - - -
Block No. 1	①
Parcel No.	10
Subdivision Lot No.	112
Deed Dimension	27'
Scaled Dimension	(27.2')
Deed Area	148.2A(c)

ST. LAWRENCE COUNTY
 NEW YORK
REAL PROPERTY
 COUNTY OFFICE BUILDING
 CANTON, NEW YORK 13617
 (315) 379-2272 OFFICE
 (315) 229-3222 FAX



REVISIONS	DATE	BY

KEY MAP	
83.001	84.001
83.002	84.002
83.003	84.003
83.004	84.004
83.005	84.005

TOWN OF: MORRISTOWN
 DISTRICT NO.: 406089
 Date of Conversion: 11/14/08 JIM

SECTION NO. 83.004
 PROPERTY MAP