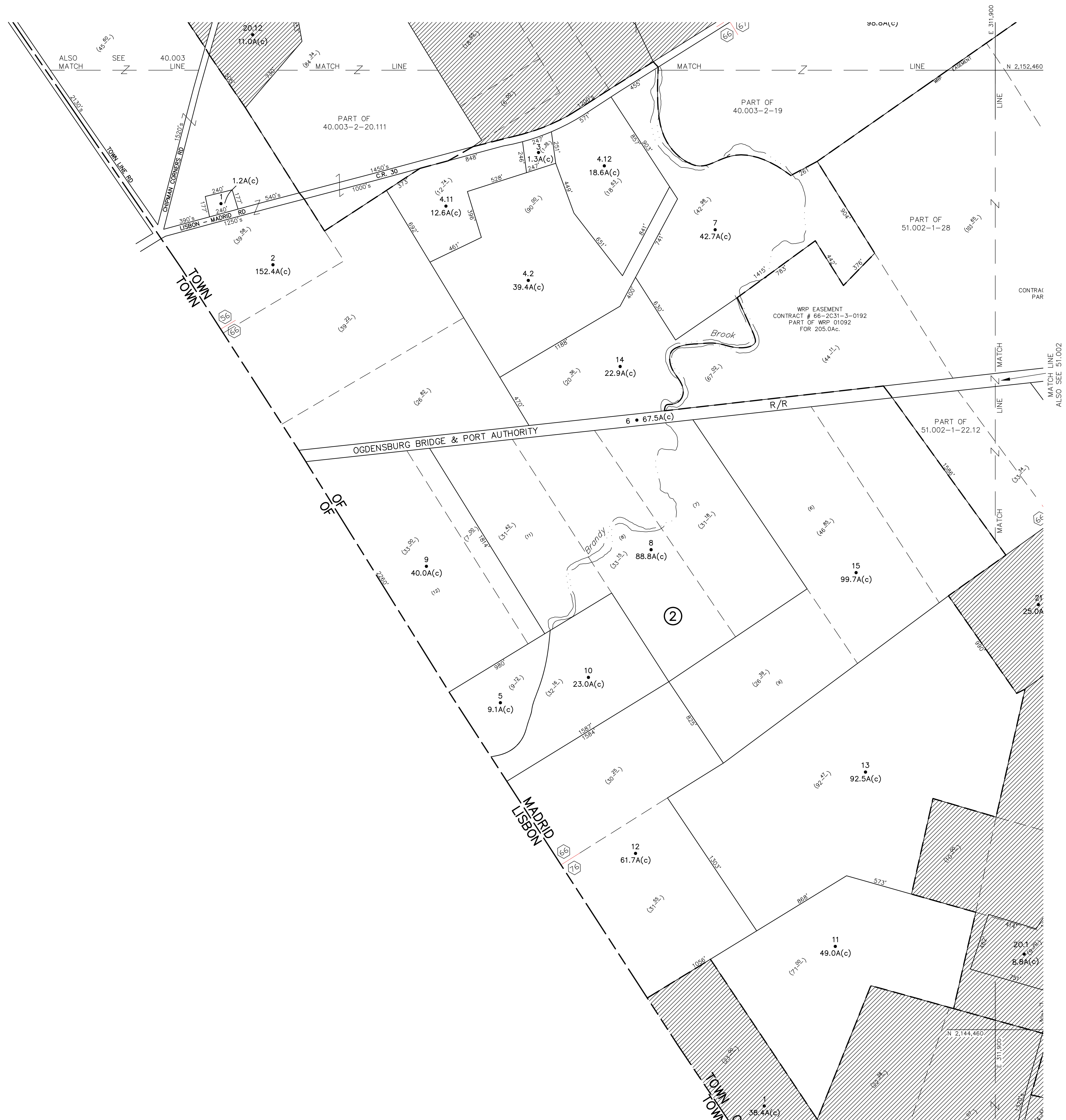


N 2,152,460  
E 299,900

N 2,144,460  
E 299,900



UNLESS DRAWN OTHERWISE, ALL PROPERTIES ARE WITHIN THE FOLLOWING DISTRICTS:

SCHOOL 405601 WATER  
FIRE 75024 SENIOR  
LIGHT 75024 AGRICULTURAL

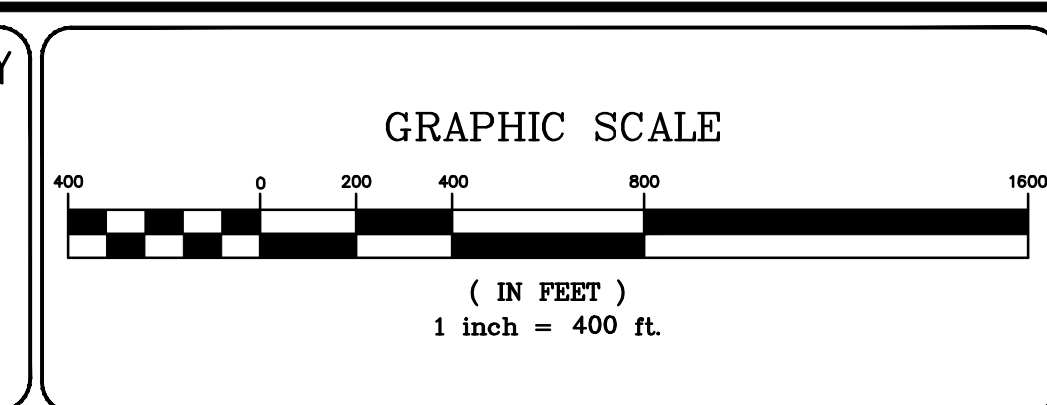
THIS MAP WAS PREPARED FOR TAX PURPOSES ONLY  
NOT TO BE USED FOR CONVEYANCE

**NOTICE OF DISCLAIMER**  
This map represents a compilation of graphical and textual information from deeds and surveys, a planimetric base map, and digital conversions of hand drawn mylar maps. Errors and omissions can occur from each of these sources; each source represents a large number of records and originators of information. As a practical matter, the County does not warrant the accuracy or completeness of the information portrayed. The end user of these maps agrees to accept the data "as is" with the full knowledge that errors and omissions may exist, and to hold harmless the County for any damages that may result from an inappropriate use of these maps.

**DRAWING LEGEND**  
International Boundary  
County Boundary  
Town Boundary  
Village Boundary  
Property or R/W Line

Denotes Common Owner  
Railroad  
Water  
Block Limit Line  
Special District Line  
Subdivision Lot Line

Block No. 1  
Parcel No. 27  
Subdivision Lot No. (10)  
Deed Dimension 112'  
Scaled Dimension 27'  
Deed Area (27.3)  
Calculated Area 148.2A(c)



NO.	REVISIONS	DATE	BY
7			
6			
5			
4			
3			
2			
1			

**KEY MAP**

40.003	40.002	41.001
40.003	40.003	40.003
51.003	51.004	52.001
51.003	51.004	52.003

TOWN OF: MADRID  
DISTRICT NO.: 405600  
Date of Conversion: 11/01/09 LDC

SECTION NO. 51.001  
PROPERTY MAP