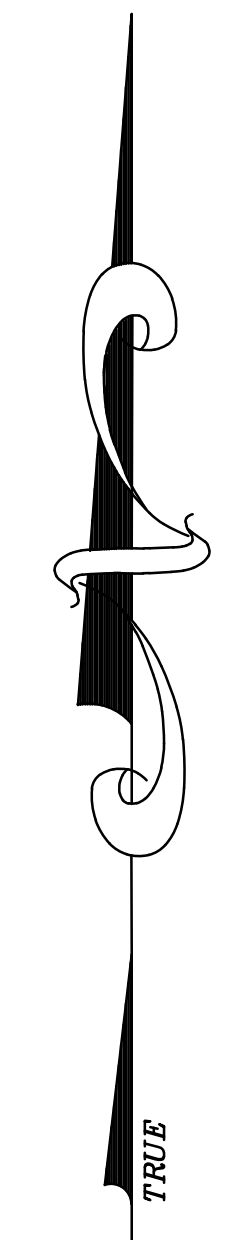
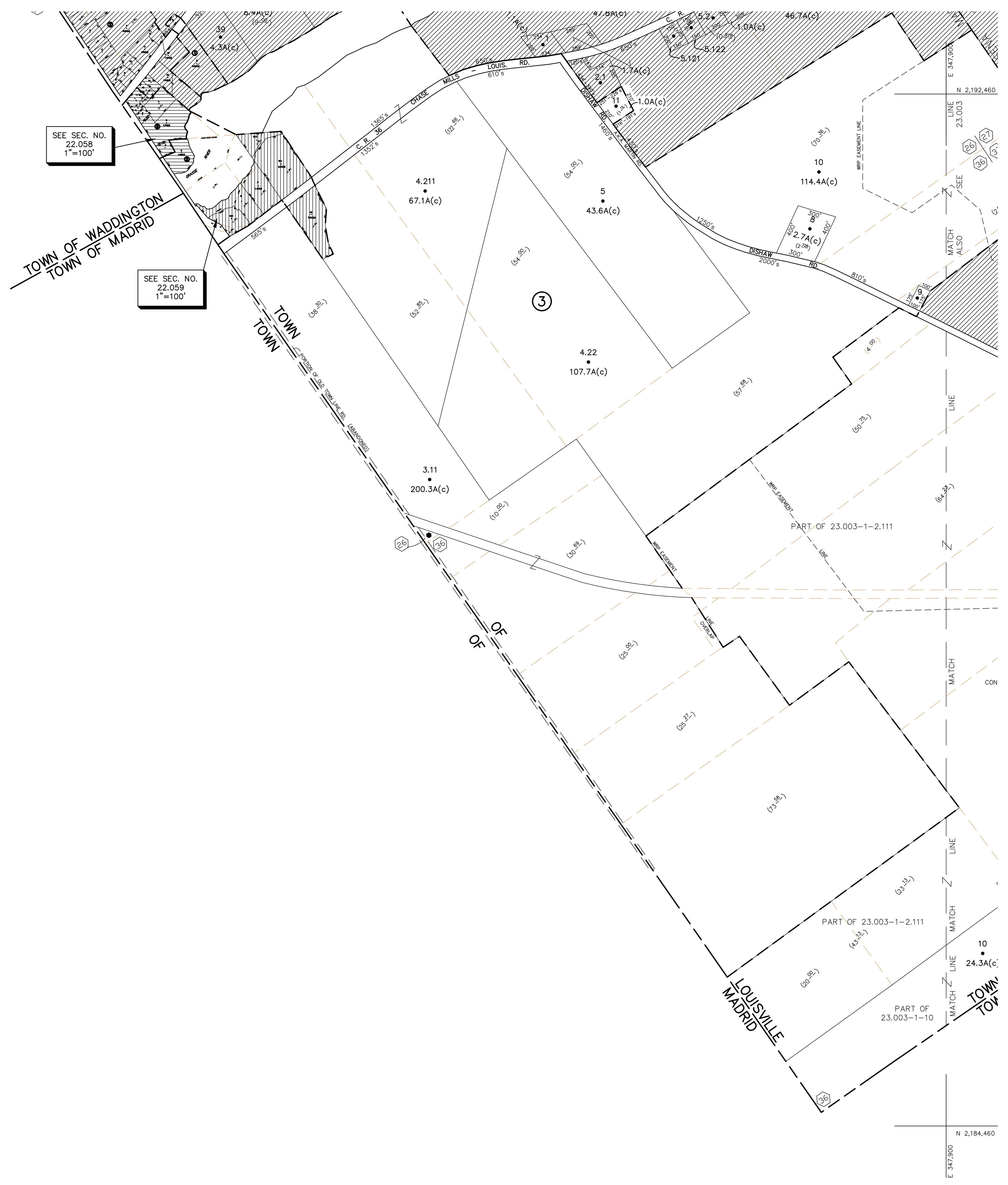


N 2,192,460  
E 335,900

N 2,184,460  
E 335,900



UNLESS DRAWN OTHERWISE, ALL PROPERTIES ARE WITHIN THE FOLLOWING DISTRICTS:

SCHOOL	455801	WATER	
FIRE	17052	SEWER	
LIGHT		AGRICULTURAL	

THIS MAP WAS PREPARED FOR TAX PURPOSES ONLY  
NOT TO BE USED FOR CONVEYANCE

**NOTICE OF DISCLAIMER**

This map represents a compilation of graphical and textual information from deeds and surveys, a planimetric base map, and digital conversions of hand drawn mylar maps. Errors and omissions can occur from each of these sources; each source represents a large number of records and originators of information. As a practical matter, the County does not warrant the accuracy or completeness of the information portrayed. The end user of these maps agrees to accept the data "as is" with the full knowledge that errors and omissions may exist, and to hold harmless the County for any damages that may result from an inappropriate use of these maps.

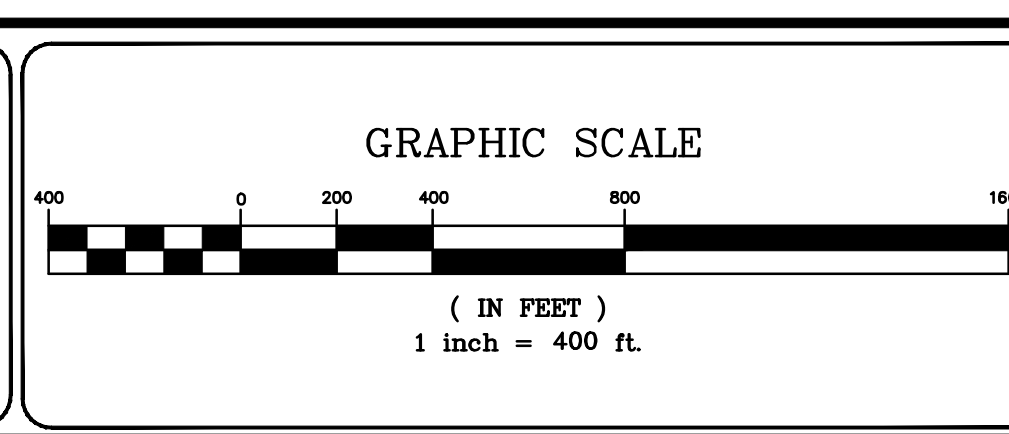
**DRAWING LEGEND**

International Boundary	— — — — —	Denotes Common Owner Railroad	Z
County Boundary	— — — — —	Water	~~~~~
Town Boundary	— — — — —	Block Limit Line	— · — · — ·
Village Boundary	— · — · — ·	Special District Line	- - - - -
Property or R/W Line	— — — — —	Subdivision Lot Line	— · — · — ·

Block No.	①
Parcel No.	27
Subdivision Lot No.	(10)
Deed Dimension	112'
Scaled Dimension	27'±
Deed Area	(27'±)
Calculated Area	148.2A(c)

ST. LAWRENCE COUNTY  
NEW YORK  
REAL PROPERTY

COUNTY OFFICE BUILDING  
CANTON, NEW YORK 13617  
(315) 379-2272 OFFICE  
(315) 229-3222 FAX



7			
6			
5			
4			
3			
2			
1			
REVISIONS		DATE	BY

**KEY MAP**

14.003	14.004	15.003
22.002	23.001	
22.004	23.003	

TOWN OF: **LOUISVILLE**

DISTRICT NO.: **405289**

Date of Conversion 03/01/08 LDC

SECTION NO.  
**22.004**

PROPERTY MAP