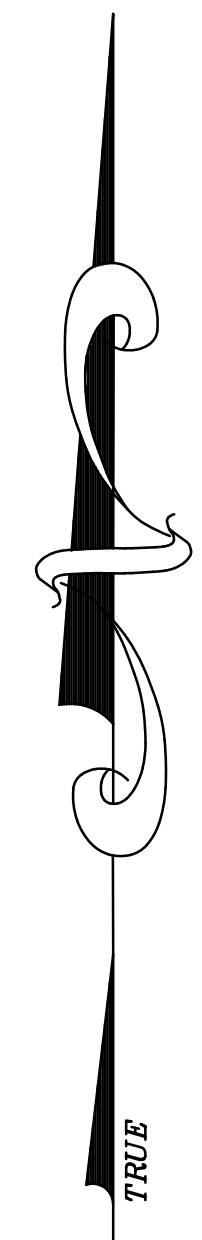
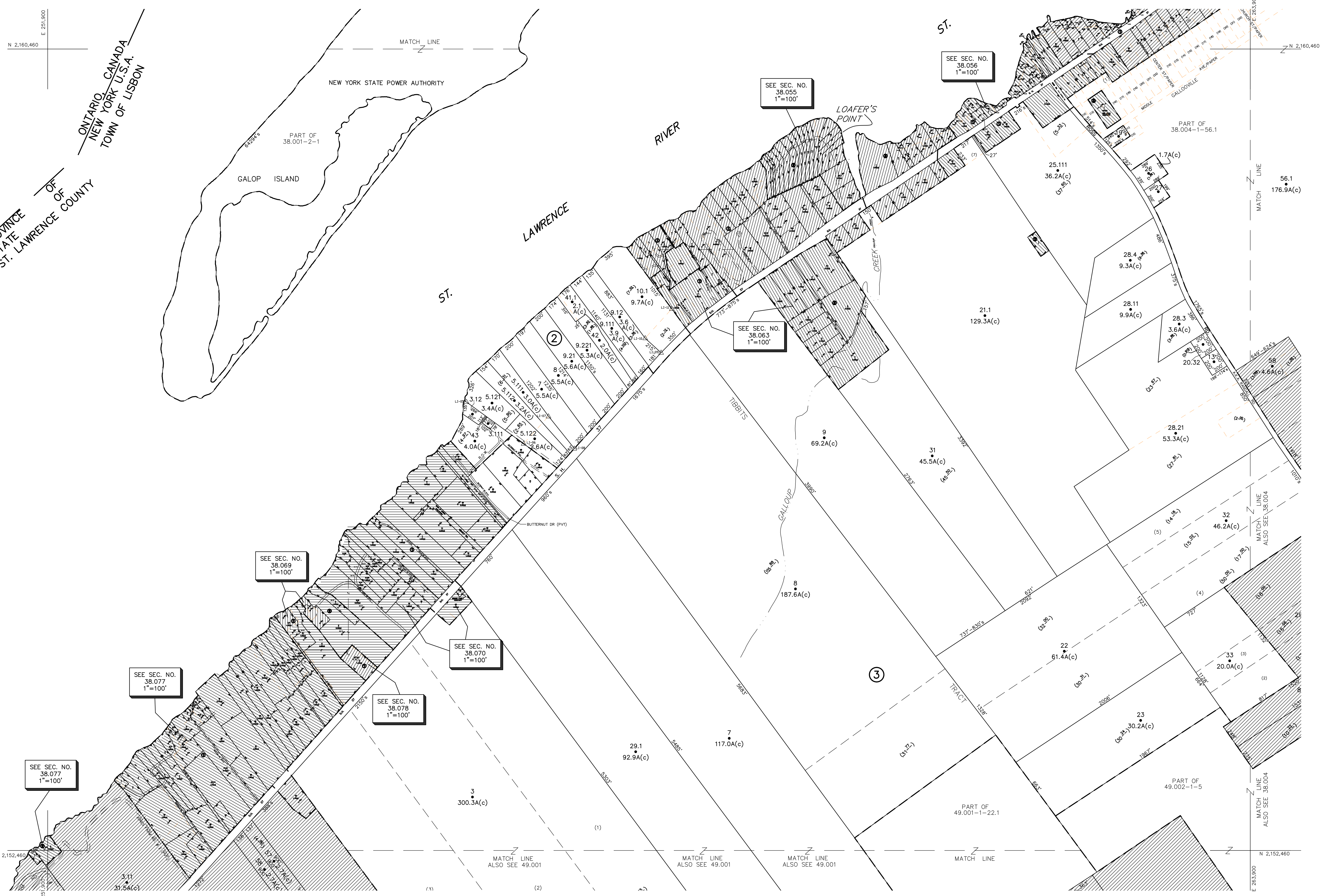


ONTARIO CANADA
 NEW YORK U.S.A.
 TOWN OF LISBON
 PROVINCE OF ST. LAWRENCE COUNTY

N 2,160,460
 E 251,800

N 2,152,460
 E 251,800



UNLESS DRAWN OTHERWISE, ALL PROPERTIES ARE WITHIN THE FOLLOWING DISTRICTS:

SCHOOL	405002	WATER	
FIRE	75001	SEWER	
LIGHT		AGRICULTURAL	

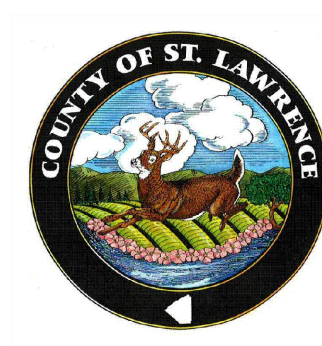
THIS MAP WAS PREPARED FOR TAX PURPOSES ONLY
 NOT TO BE USED FOR CONVEYANCE

NOTICE OF DISCLAIMER
 This map represents a compilation of graphical and textual information from deeds and surveys, a planimetric base map, and digital conversions of hand drawn mylar maps. Errors and omissions can occur from each of these sources; each source represents a large number of records and originators of information. As a practical matter, the County does not warrant the accuracy or completeness of the information portrayed. The end user of these maps agrees to accept the data "as is" with the full knowledge that errors and omissions may exist, and to hold harmless the County for any damages that may result from an inappropriate use of these maps.

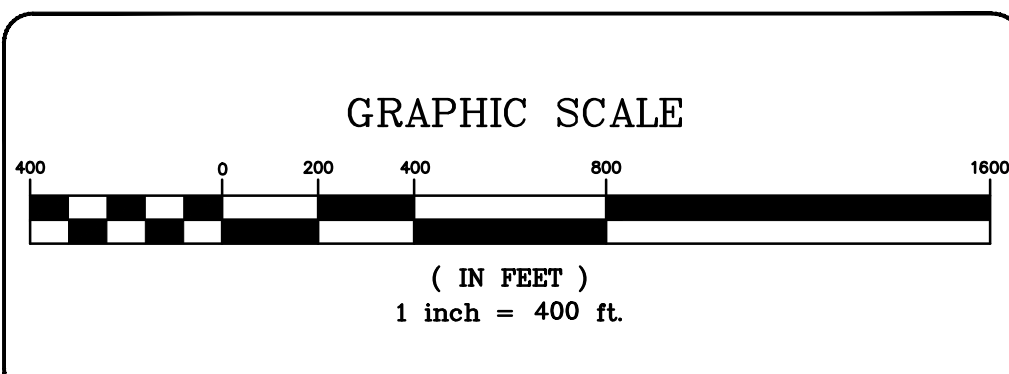
DRAWING LEGEND

International Boundary	— — — — —	Denotes Common Owner	Z
County Boundary	— — — — —	Railroad	— — — — —
Town Boundary	— — — — —	Water	— — — — —
Village Boundary	— — — — —	Block Limit Line	— — — — —
Property or R/W Line	— — — — —	Special District Line	— — — — —
		Subdivision Lot Line	— — — — —

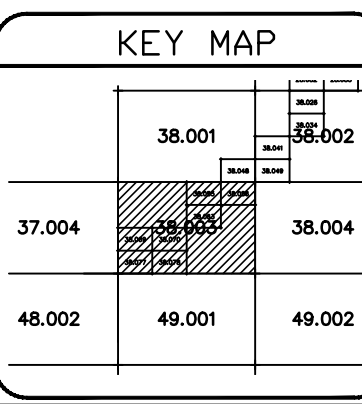
Block No.	①
Parcel No.	27
Subdivision Lot No.	(10)
Deed Dimension	112'
Scaled Dimension	27'
Deed Area	(27.3)
Calculated Area	148.2A(c)



ST. LAWRENCE COUNTY
 NEW YORK
 REAL PROPERTY
 COUNTY OFFICE BUILDING
 CANTON, NEW YORK 13617
 (315) 379-2272 OFFICE
 (315) 229-3222 FAX



REVISIONS	DATE	BY
7		
6		
5		
4		
3		
2		
1		



TOWN OF: LISBON
 DISTRICT NO.: 405000
 Date of Conversion: 2/16/2010 MRP

SECTION NO.
38.003
 PROPERTY MAP