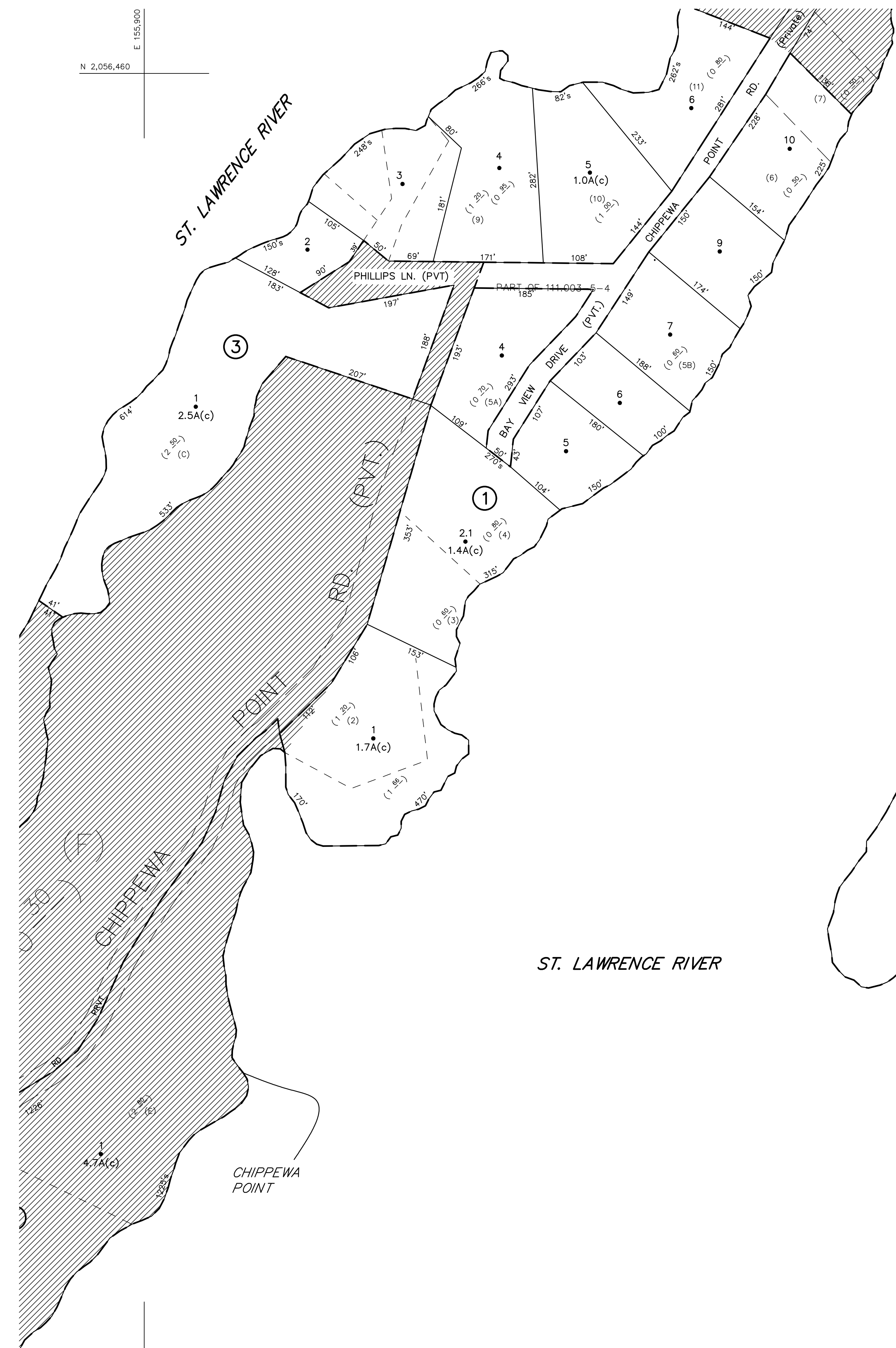
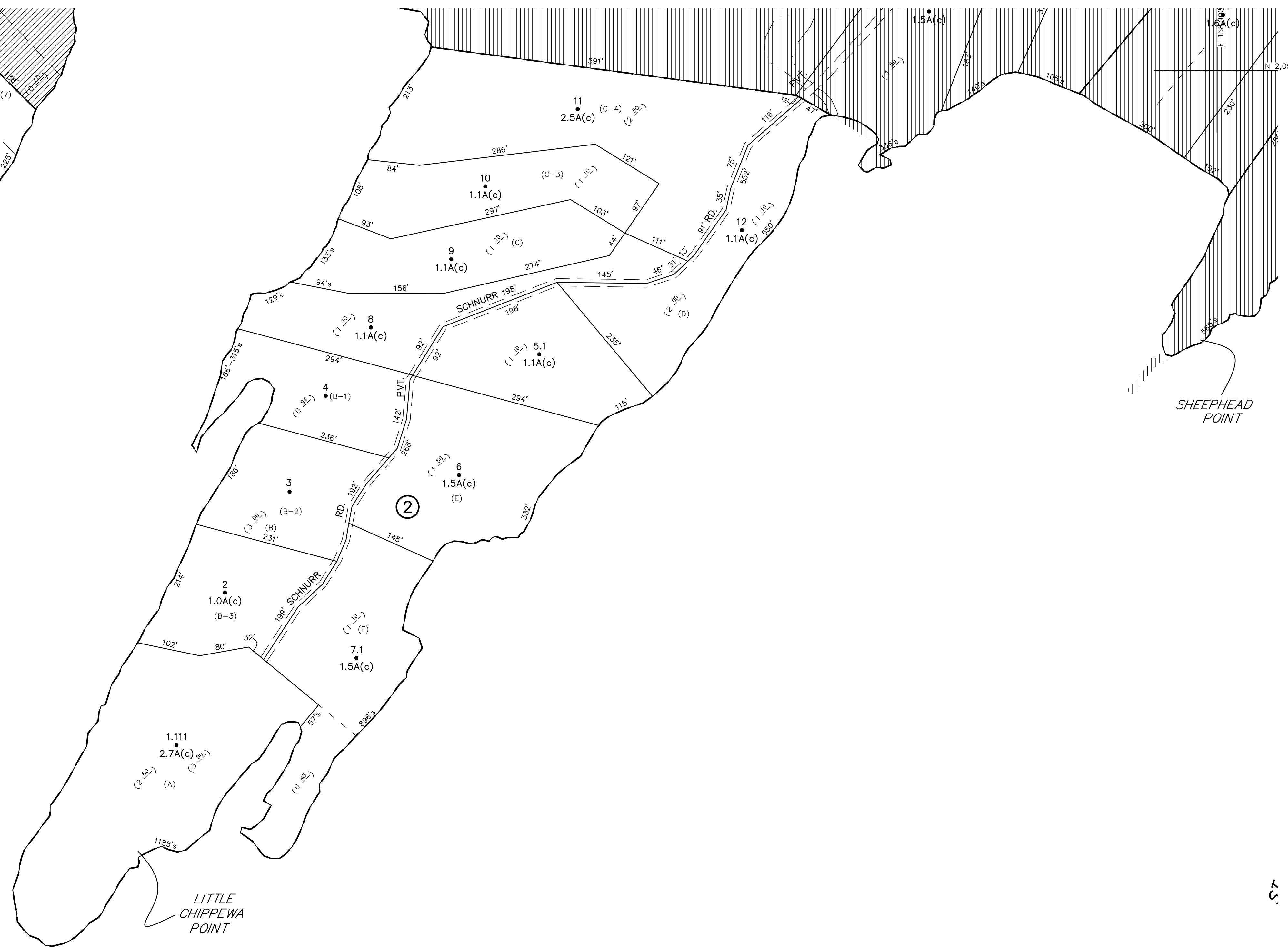


N 2,056,460
E 125,800

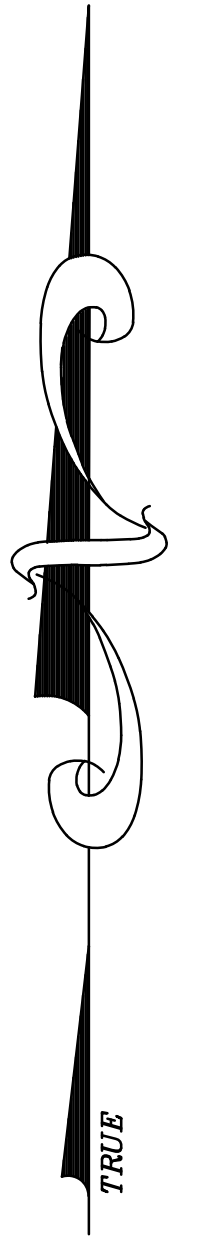


N 2,054,460
E 125,800

N 2,056,460
E 125,800



N 2,054,460
E 125,800



UNLESS DRAWN OTHERWISE, ALL PROPERTIES ARE WITHIN THE FOLLOWING DISTRICTS:

SCHOOL	454201	WATER	
FIRE	75077	SEWER	
LIGHT		AGRICULTURAL	

THIS MAP WAS PREPARED FOR TAX PURPOSES ONLY
NOT TO BE USED FOR CONVEYANCE

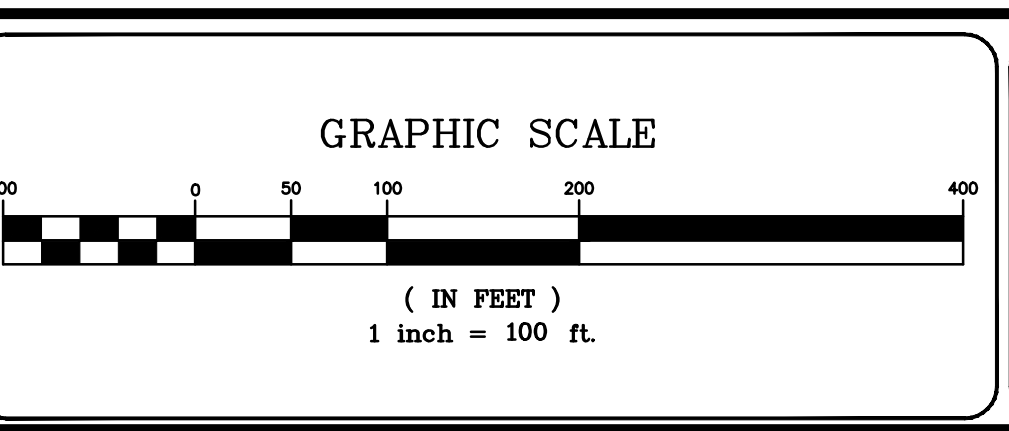
NOTICE OF DISCLAIMER
This map represents a compilation of graphical and textual information from deeds and surveys, a planimetric base map, and digital conversions of hand drawn mylar maps. Errors and omissions can occur from each of these sources; each source represents a large number of records and originators of information. As a practical matter, the County does not warrant the accuracy or completeness of the information portrayed. The end user of these maps agrees to accept the data "as is" with the full knowledge that errors and omissions may exist, and to hold harmless the County for any damages that may result from an inappropriate use of these maps.

DRAWING LEGEND

International Boundary	— — — — —	Denotes Common Owner	①
County Boundary	— — — — —	Railroad	—+—+—+—+—+—+—
Town Boundary	— — — — —	Water	~~~~~
Village Boundary	— — — — —	Block Limit Line	— · — · — · — · —
Property or R/W Line	— — — — —	Special District Line	— · — · — · — · —
		Subdivision Lot Line	— · — · — · — · —

Block No.	27
Parcel No.	112
Subdivision Lot No.	27
Deed Dimension	27' x 112'
Scaled Dimension	27' x 112'
Deed Area	3027.24 sq. ft.
Calculated Area	148.2A(c)

ST. LAWRENCE COUNTY
NEW YORK
REAL PROPERTY
COUNTY OFFICE BUILDING
CANTON, NEW YORK 13617
(315) 379-2272 OFFICE
(315) 229-3222 FAX



NO.	REVISIONS	DATE	BY
7			
6			
5			
4			
3			
2			
1			

KEY MAP

110.004	111.003
111.000	111.001
111.002	111.003
111.004	111.005
111.006	111.007
111.008	111.009
111.010	111.011
111.012	111.013
111.014	111.015
111.016	111.017
111.018	111.019
111.020	111.021
111.022	111.023
111.024	111.025
111.026	111.027
111.028	111.029
111.030	111.031
111.032	111.033
111.034	111.035
111.036	111.037
111.038	111.039
111.040	111.041
111.042	111.043
111.044	111.045
111.046	111.047
111.048	111.049
111.050	111.051
111.052	111.053
111.054	111.055
111.056	111.057
111.058	111.059
111.060	111.061
111.062	111.063
111.064	111.065
111.066	111.067
111.068	111.069
111.070	111.071
111.072	111.073
111.074	111.075
111.076	111.077
111.078	111.079
111.080	111.081
111.082	111.083
111.084	111.085
111.086	111.087
111.088	111.089
111.090	111.091
111.092	111.093
111.094	111.095
111.096	111.097
111.098	111.099
111.100	111.101
111.102	111.103
111.104	111.105
111.106	111.107
111.108	111.109
111.110	111.111
111.112	111.113
111.114	111.115
111.116	111.117
111.118	111.119
111.120	111.121
111.122	111.123
111.124	111.125
111.126	111.127
111.128	111.129
111.130	111.131
111.132	111.133
111.134	111.135
111.136	111.137
111.138	111.139
111.140	111.141
111.142	111.143
111.144	111.145
111.146	111.147
111.148	111.149
111.150	111.151
111.152	111.153
111.154	111.155
111.156	111.157
111.158	111.159
111.160	111.161
111.162	111.163
111.164	111.165
111.166	111.167
111.168	111.169
111.170	111.171
111.172	111.173
111.174	111.175
111.176	111.177
111.178	111.179
111.180	111.181
111.182	111.183
111.184	111.185
111.186	111.187
111.188	111.189
111.190	111.191
111.192	111.193
111.194	111.195
111.196	111.197
111.198	111.199
111.200	111.201

TOWN OF: **HAMMOND**
DISTRICT NO.: **404289**
Date of Conversion: 01/07/09 JIM

SECTION NO.
126.021
PROPERTY MAP