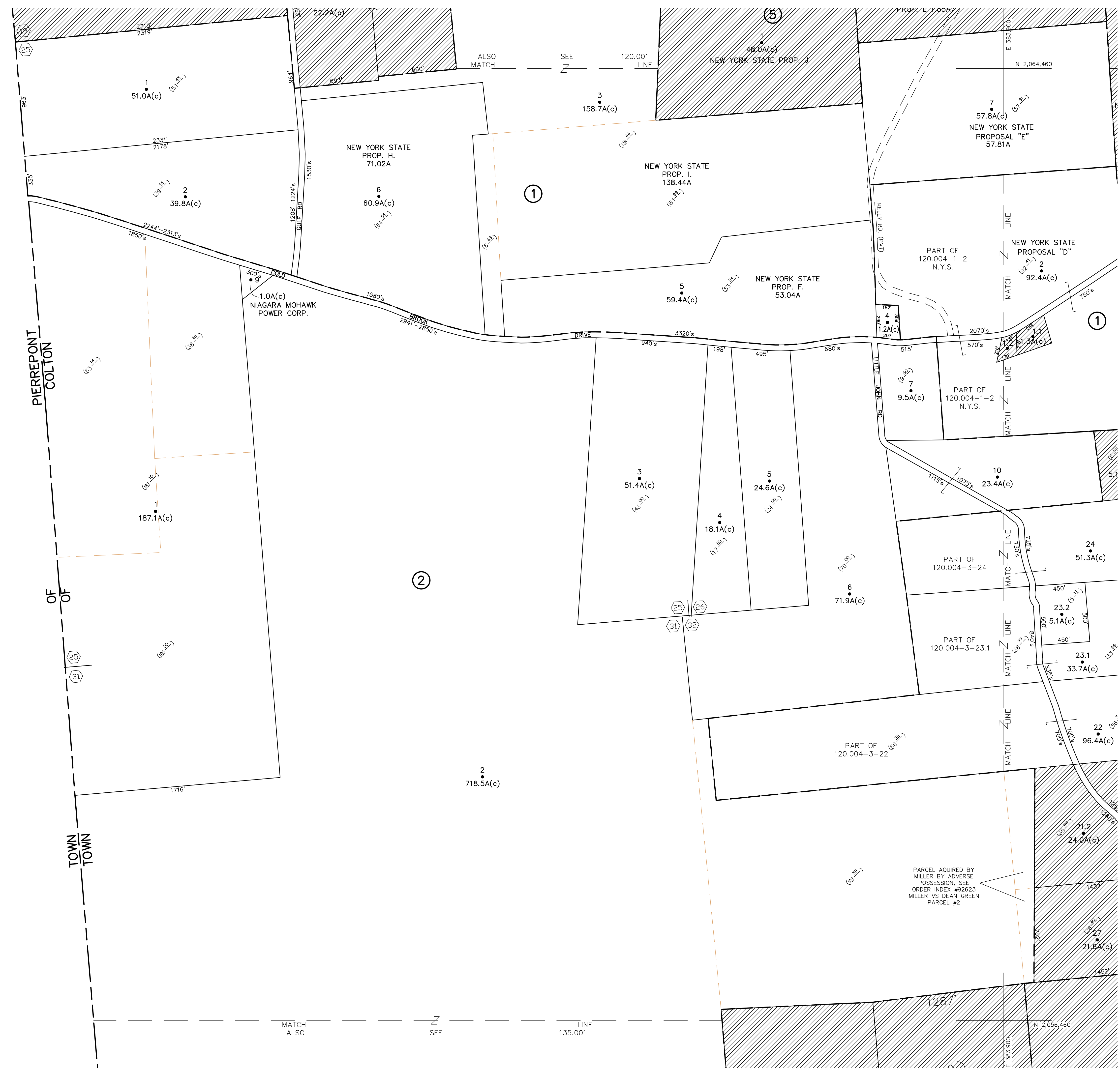
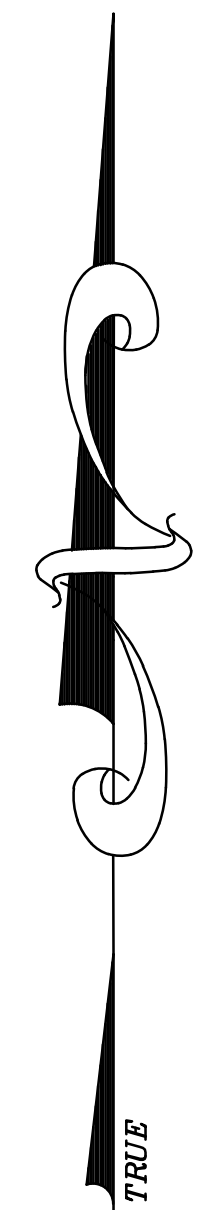


N 2,064,460
E 371,800



N 2,056,460
E 371,800

UNLESS DRAWN OTHERWISE, ALL PROPERTIES ARE WITHIN THE FOLLOWING DISTRICTS:

SCHOOL	402801	WATER	
FIRE	12003	SEWER	
LIGHT		AGRICULTURAL	

THIS MAP WAS PREPARED FOR TAX PURPOSES ONLY
NOT TO BE USED FOR CONVEYANCE

NOTICE OF DISCLAIMER

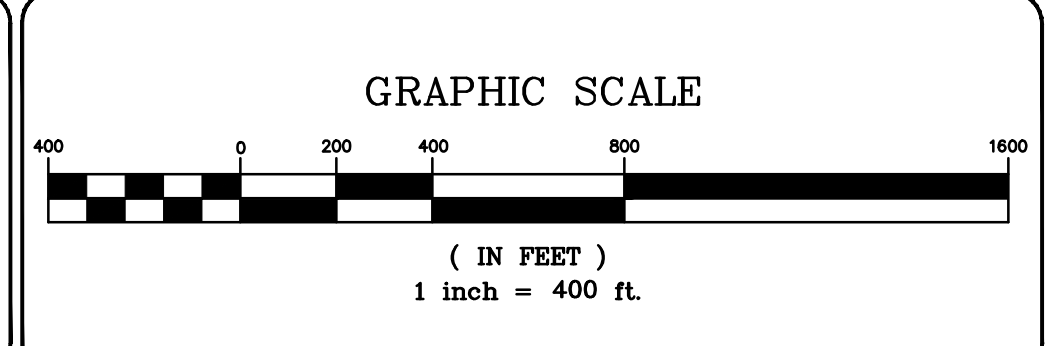
This map represents a compilation of graphical and textual information from deeds and surveys, a planimetric base map, and digital conversions of hand drawn mylar maps. Errors and omissions can occur from each of these sources; each source represents a large number of records and originators of information. As a practical matter, the County does not warrant the accuracy or completeness of the information portrayed. The end user of these maps agrees to accept the data "as is" with the full knowledge that errors and omissions may exist, and to hold harmless the County for any damages that may result from an inappropriate use of these maps.

DRAWING LEGEND

International Boundary	=====	Denotes Common Owner	Z
County Boundary	-----	Railroad	====+====
Town Boundary	- - - - -	Water	~~~~~
Village Boundary	- · - · -	Block Limit Line	-----
Property or R/W Line	_____	Special District Line	- · - · -
		Subdivision Lot Line	-----
Block No.	①		
Parcel No.	27		
Subdivision Lot No.	(10)		
Deed Dimension	112'		
Scaled Dimension	27'		
Deed Area	(27.35)		
Calculated Area	148.2A(c)		



ST. LAWRENCE COUNTY
NEW YORK
REAL PROPERTY
COUNTY OFFICE BUILDING
CANTON, NEW YORK 13617
(315) 379-2272 OFFICE
(315) 229-3222 FAX



7			
6			
5			
4			
3			
2			
1			
	REVISIONS	DATE	BY

KEY MAP

120.001 120.002 120.003 120.004
120.005 120.006 120.007 120.008
120.009 120.010 120.011 120.012
120.013 120.014 120.015 120.016
120.017 120.018 120.019 120.020

TOWN OF:	COLTON
DISTRICT NO.:	402800
Date of Conversion:	12/27/10 JIM

SECTION NO.	120.003
PROPERTY MAP	