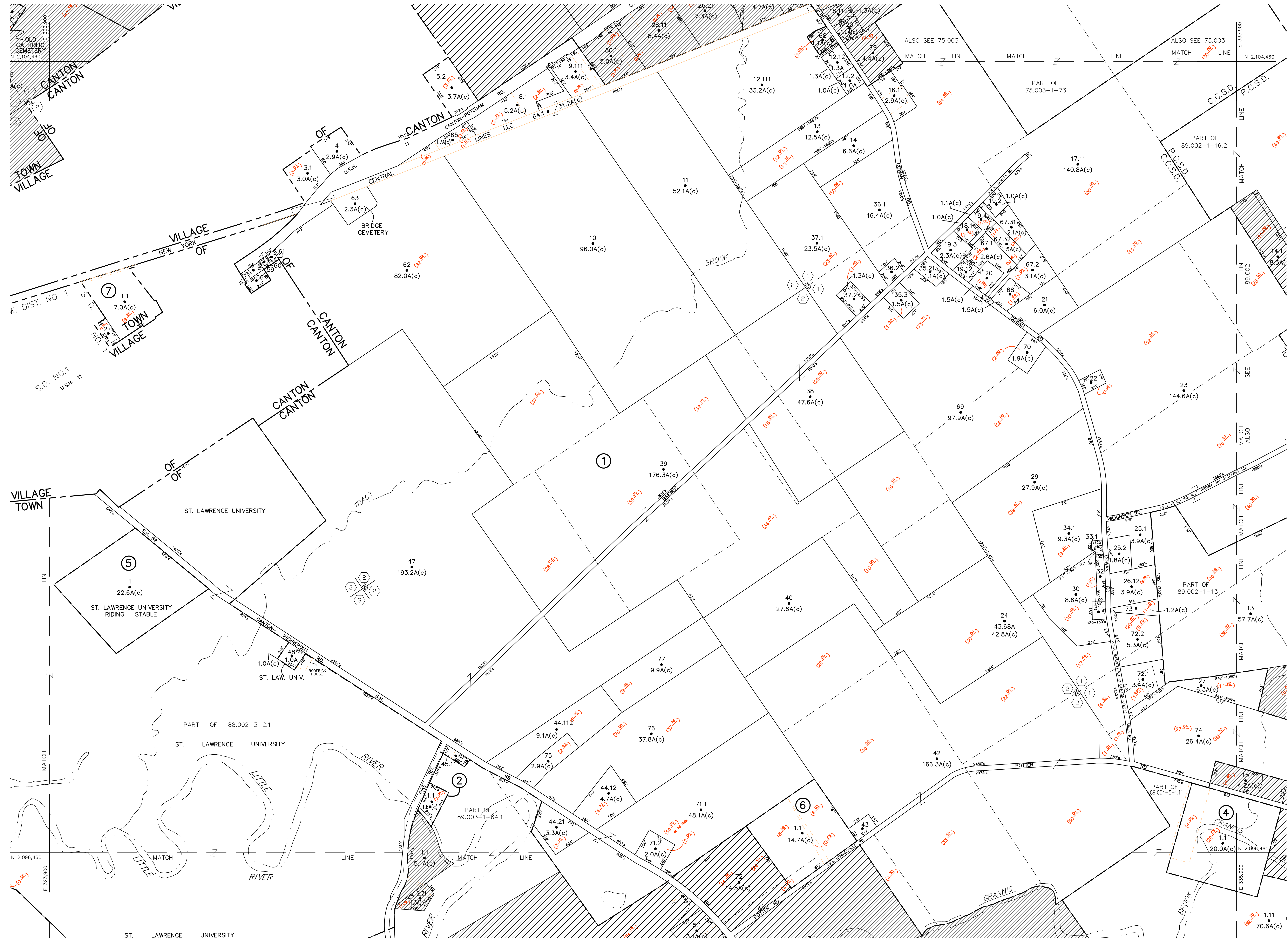


THIS MAP WAS PREPARED FOR TAX PURPOSES ONLY  
NOT TO BE USED FOR CONVEYANCE



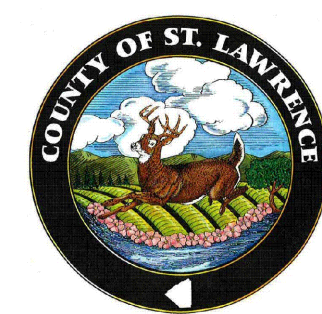
UNLESS DRAWN OTHERWISE, ALL PROPERTIES ARE WITHIN THE FOLLOWING DISTRICTS:  
SCHOOL 402289 WATER  
FIRE 75003 SENIOR  
LIGHT 75004 AGRICULTURAL

**NOTICE OF DISCLAIMER**

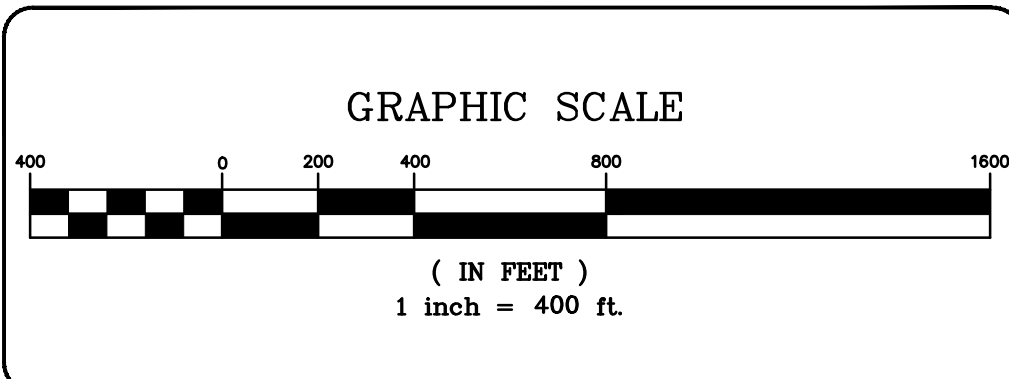
This map represents a compilation of graphical and textual information from deeds and surveys, a planimetric base map, and digital conversions of hand drawn mylar maps. Errors and omissions can occur from each of these sources; each source represents a large number of records and originators of information. As a practical matter, the County does not warrant the accuracy or completeness of the information portrayed. The end user of these maps agrees to accept the data "as is" with the full knowledge that errors and omissions may exist, and to hold harmless the County for any damages that may result from an inappropriate use of these maps.

**DRAWING LEGEND**

International Boundary	—————	Denotes Common Owner	Z	Block No.	①
County Boundary	—————	Railroad	—————	Parcel No.	27
Town Boundary	—————	Water	—————	Subdivision Lot No.	(10)
Village Boundary	—————	Block Limit Line	—————	Deed Dimension	112
Property or R/W Line	—————	Special District Line	—————	Scaled Dimension	27
		Subdivision Lot Line	—————	Deed Area	(27.3)
				Calculated Area	148.2A(c)



ST. LAWRENCE COUNTY  
NEW YORK  
REAL PROPERTY  
COUNTY OFFICE BUILDING  
CANTON, NEW YORK 13617  
(315) 379-2272 OFFICE  
(315) 229-3222 FAX



7			
6			
5			
4			
3			
2			
1			
	REVISIONS	DATE	BY

KEY MAP

74.004	75.003
88.002	88.002
88.004	88.004

TOWN OF: CANTON  
DISTRICT NO.: 402289  
Date of Conversion: 2/20/2008 Spike

SECTION NO.  
89.001  
PROPERTY MAP