



UNLESS DRAWN OTHERWISE, ALL PROPERTIES ARE WITHIN THE FOLLOWING DISTRICTS:

SCHOOL 406404 WATER  
 FIRE SENECA  
 LIGHT AGRICULTURAL

THIS MAP WAS PREPARED FOR TAX PURPOSES ONLY  
 NOT TO BE USED FOR CONVEYANCE

**NOTICE OF DISCLAIMER**

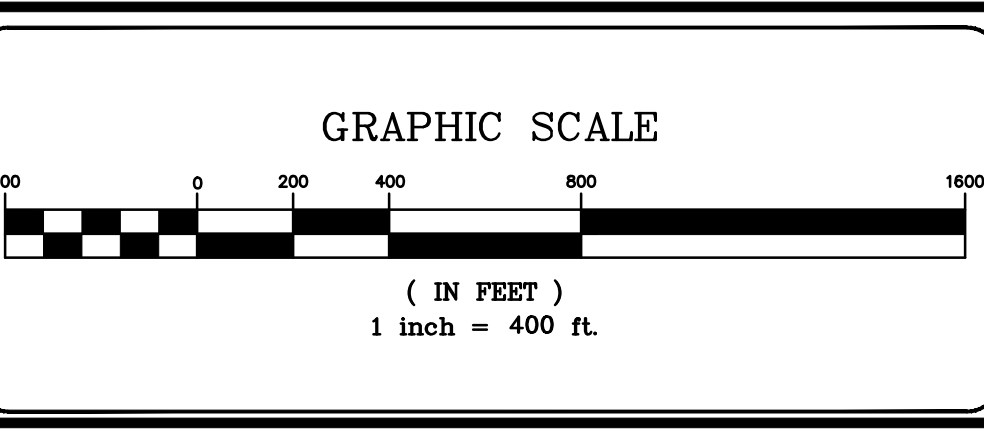
This map represents a compilation of graphical and textual information from deeds and surveys, a planimetric base map, and digital conversions of hand drawn mylar maps. Errors and omissions can occur from each of these sources; each source represents a large number of records and originators of information. As a practical matter, the County does not warrant the accuracy or completeness of the information portrayed. The use of these maps agrees to accept the data "as is" with the full knowledge that errors and omissions may exist, and to hold harmless the County for any damages that may result from an inappropriate use of these maps.

**DRAWING LEGEND**

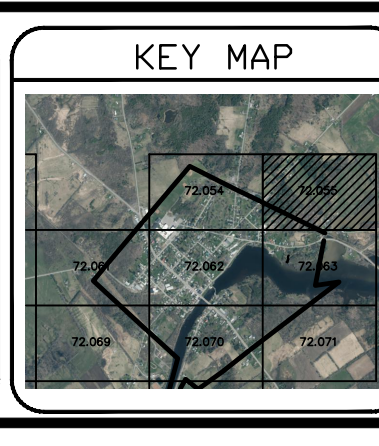
International Boundary	— — — — —	Denotes Common Owner	Z
County Boundary	— — — — —	Railroad	—+—+—+—
Town Boundary	— — — — —	Water	— — — — —
Village Boundary	— — — — —	Block Limit Line	— — — — —
Property or R/W Line	— — — — —	Special District Line	— — — — —
		Subdivision Lot Line	— — — — —

Block No.	①
Parcel No.	27
Subdivision Lot No.	(10)
Deed Dimension	112'
Scaled Dimension	27'±
Deed Area	(27.3±)
Calculated Area	148.2A(c)

**ST. LAWRENCE COUNTY**  
**NEW YORK**  
**REAL PROPERTY**  
 COUNTY OFFICE BUILDING  
 CANTON, NEW YORK 13617  
 (315) 379-2272 OFFICE  
 (315) 229-3222 FAX



7			
6			
5			
4			
3			
2			
1			
	REVISIONS	DATE	BY



TOWN OF:	OSWEGATCHIE
VILLAGE OF:	HEUVELTON
DISTRICT NO.:	406401
Date of Conversion:	xx/xx/xx FJL

SECTION NO.	72.055
PROPERTY MAP	