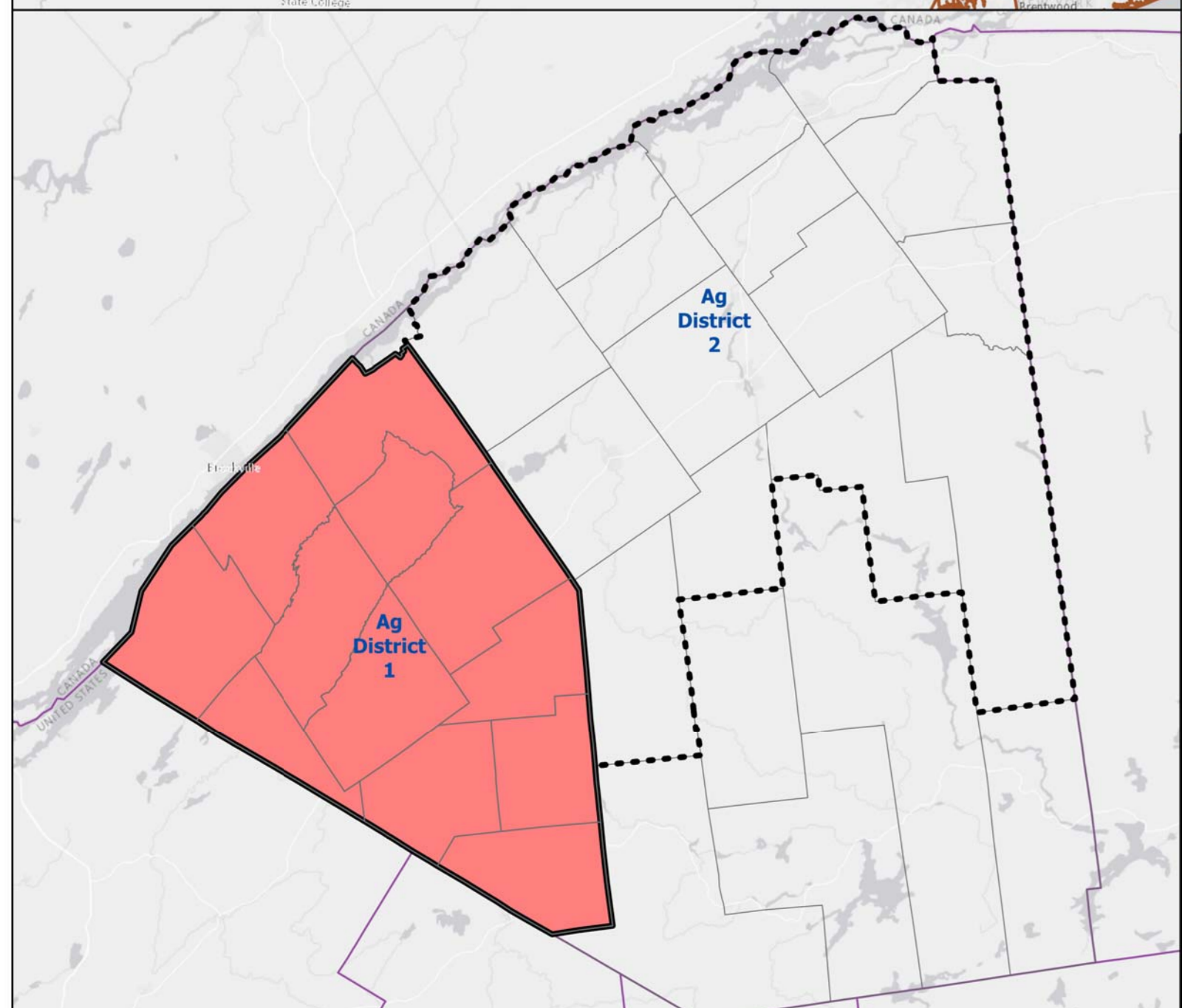
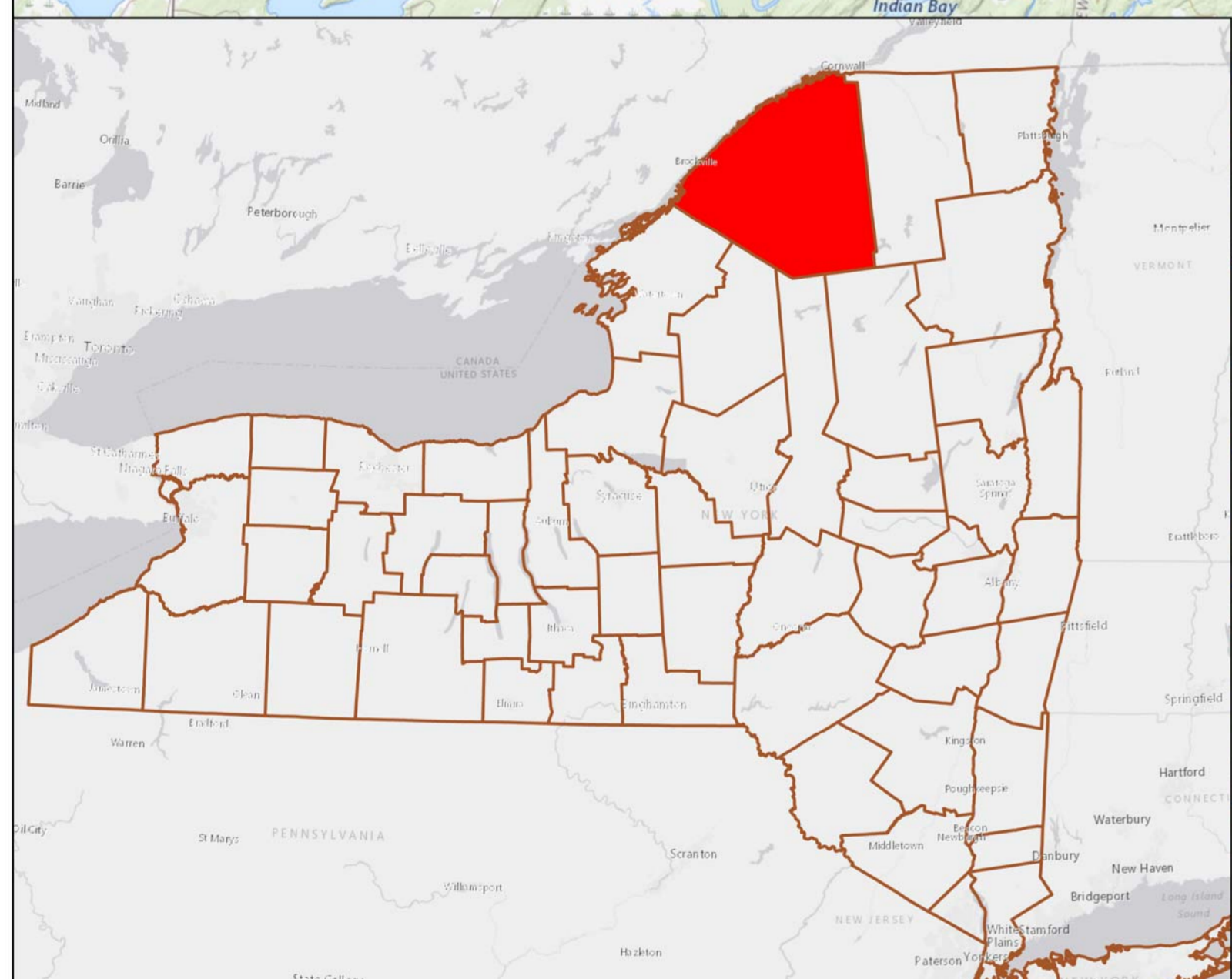
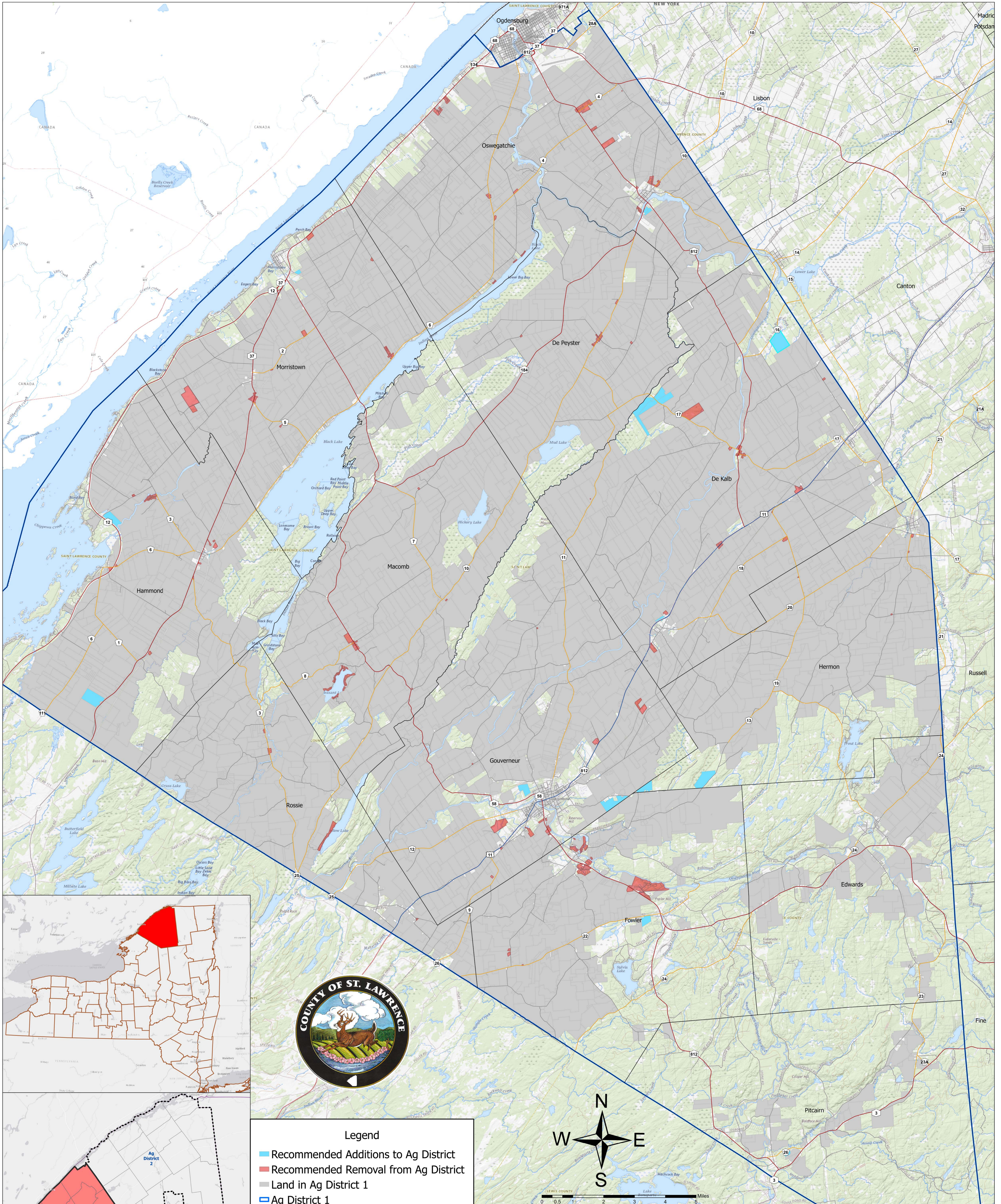


# Proposed Changes to the Agriculture District 1 Based on Eight-Year Review



- Legend**
- Recommended Additions to Ag District
  - Recommended Removal from Ag District
  - Land in Ag District 1
  - Ag District 1
  - Town and Village Borders
  - US Highway
  - State Highway
  - County Route
  - Local Road
  - Property Boundaries

This map displays proposed changes to Agriculture District 1 according to the 2024 eight-year review as described by New York State Department of Agriculture and Markets Law Article 25 Section 303-a. Based on tax assessments, property classifications, petitions from land owners and aerial imagery, the Agriculture and Farmland Protection Board is suggesting the additions and removals of the parcels displayed on this map.

This Map is for informational and planning purposes only. All information is subject to such variation and corrections as might result from a complete title search and accurate field survey.

Projection: New York State Plane East FIPS 3101  
 Datum: NAD83  
 Agriculture District: St. Lawrence County Planning Office  
 Property Boundaries: St. Lawrence County Real Property  
 Civil Boundaries: NYS GIS Clearinghouse  
 Roads: NYS GIS Clearinghouse  
 Base map: USGS National Map