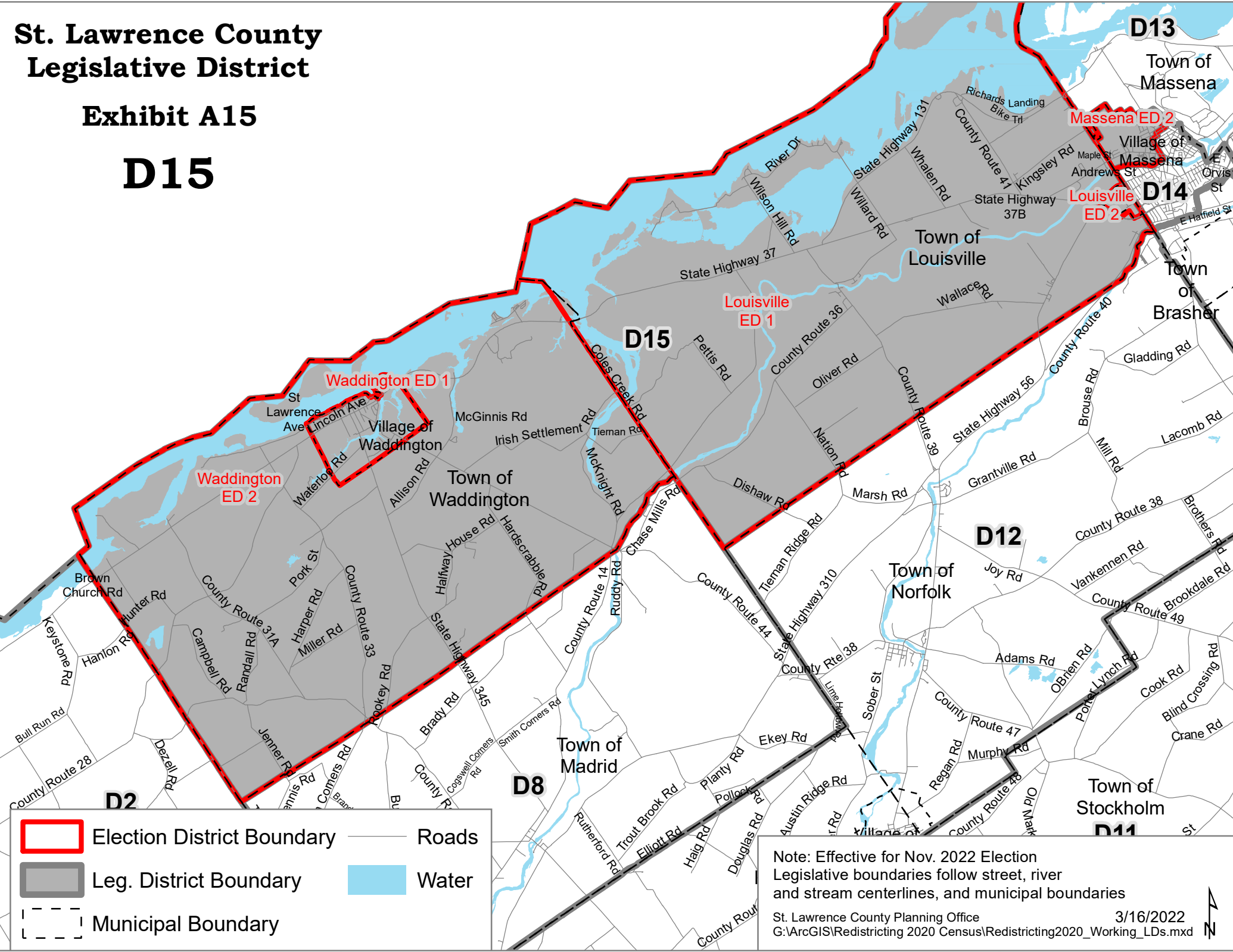


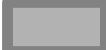




# St. Lawrence County Legislative District

## Exhibit A15

# D15



	Election District Boundary		Roads
	Leg. District Boundary		Water
	Municipal Boundary		

Note: Effective for Nov. 2022 Election  
 Legislative boundaries follow street, river  
 and stream centerlines, and municipal boundaries

St. Lawrence County Planning Office  
 G:\ArcGIS\Redistricting 2020 Census\Redistricting2020\_Working\_LDs.mxd

3/16/2022

