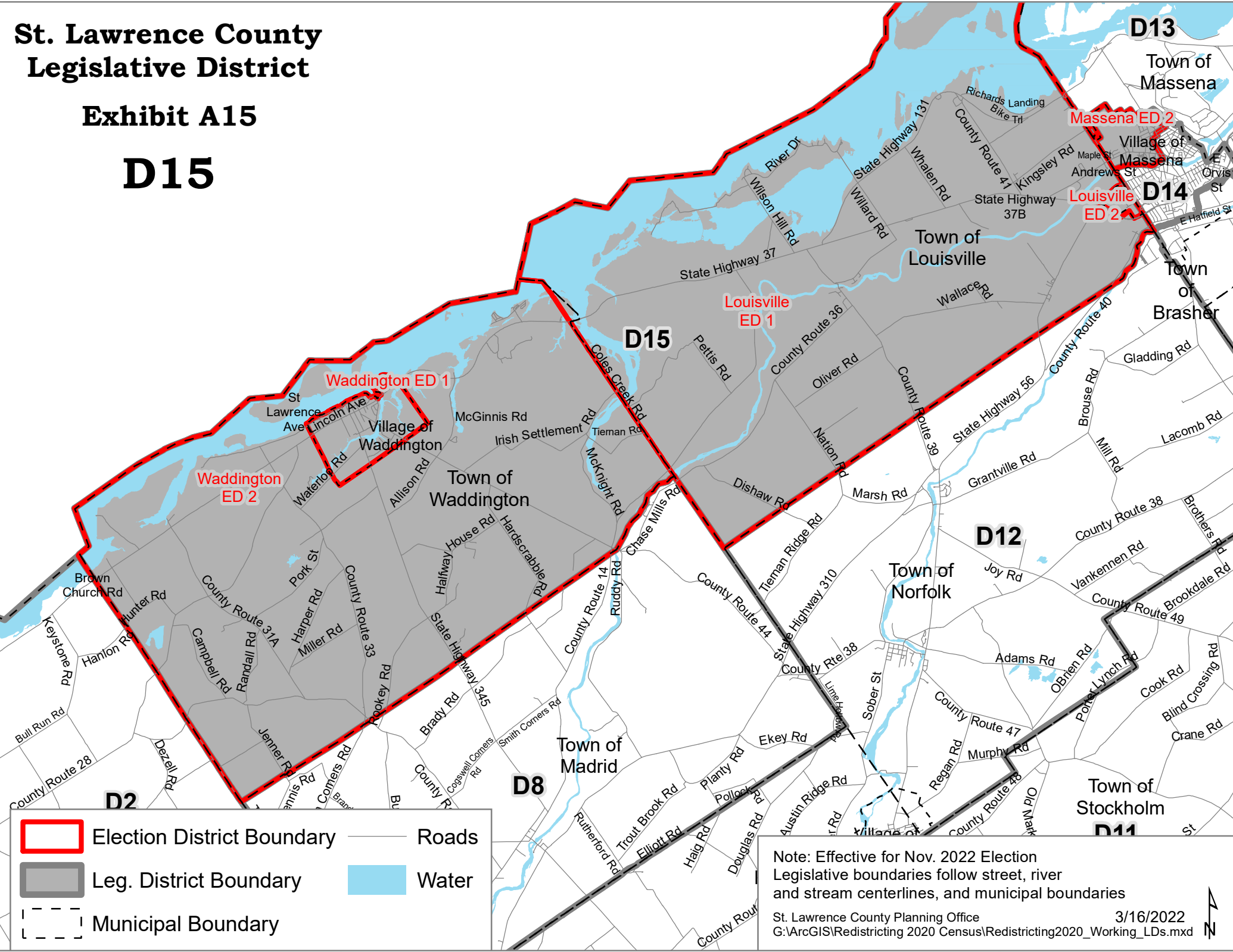


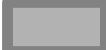




St. Lawrence County Legislative District

Exhibit A15

D15



	Election District Boundary		Leg. District Boundary		Roads		Water
	Municipal Boundary						

Note: Effective for Nov. 2022 Election
Legislative boundaries follow street, river
and stream centerlines, and municipal boundaries

St. Lawrence County Planning Office
G:\ArcGIS\Redistricting 2020 Census\Redistricting2020_Working_LDs.mxd

3/16/2022

