

St. Lawrence County Environmental Management Council

49½ Court Street

Canton, New York 13617-1169

Phone: (315) 379-2292 Fax: (315) 379-2252

E-mail: Planning@stlawco.org Website:

www.stlawco.org/Departments/Planning/AdvisoryBoards/EnvironmentalManagementCouncil

MEETING MINUTES **April 21, 2021 6:00 PM** **Via ZOOM**

Action items in bold italics / Motions underlined.

- 1. Call to Order:** In the absence of the Chair, Vice-Chair Rau called the meeting order at 6:05 pm.
- 2. Roll Call, Determination of Quorum:** *A quorum was NOT present.*
Members present: Herb Bullock; Donald O'Shea; Sue Rau, Vice-Chair; Nicole Terminelli, BOL Liaison; Tiernan Smith; Rod Tozzi; Brian Washburn.
Members absent: Catherine Bennett, Chair; Dustin Bowman; Joseph Brant; Richard Marshall; Lance Rudiger; Pat Whalen, Secretary.
Guests: Tony David, [Director, Saint Regis Mohawk Tribe \(SRMT\) Environmental Division](#).
Staff: Dakota Casserly; John Tenbusch.
- 3. Acceptance of Order of Business, Items for New Business, Items for Unfinished Business:**
 - Accepted by consensus.
- 4. Approval of the Minutes of the March 2021 EMC Meeting:**
 - A quorum was not present, therefore the minutes were not approved.
- 5. Hearings, Comments from the Public:**
 - No public comment

The speaker for this EMC meeting was Tony David, Director of the St. Regis Mohawk Tribe (SRMT) Environment Division. Tony's presentation is titled: "Ice Jams in Lower St. Regis River – Akwesasne, NY". [Link to the final report.](#)

David began his presentation by acknowledging the [Native Peoples on whose ancestral homelands we gather](#). He then continued to provide context to the [Hogansburg Dam removal](#) that was completed in 2016. The removal of this former hydroelectric dam was challenging and expensive. Furthermore, this dam was not designed to manage ice and essentially his staff and Clarkson Professors, [Fengbin Huang](#) and [Hung Tao Shen](#), set out to study ice jams on the Lower St. Regis River (SRR) pre- and post-dam removal.



Historically, there were 25 ice jams recorded on the SRR between 1867 and 2012, with major jams in Hogansburg in: 1867, 1935, 1981, and 2018. The major jams caused severe flooding which resulted in damaged homes, evacuation, and community stress.

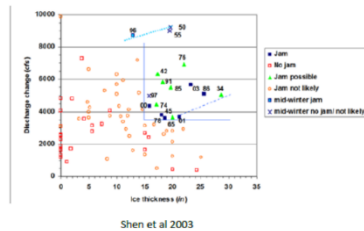
EMC: Everybody Must Care!

Why do ice jams occur? According to Professor Shen's research, it's a combination factors: ice thickness, high river discharge (freshet: the flood of a river from heavy rain or snow melt), decrease in slope, decrease in river velocity (depth increase and river widening), blockages (stable ice), and debris. The significance of weather is also critical, as their data show, winters with severe cold and then short warm/wet spells are what drive the

How do ice jams occur?

- Ice thickness
- High river discharge

Where Do they Occur?

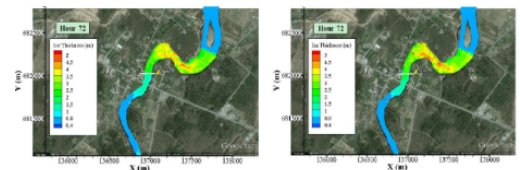


aforementioned factors to cause ice jams. In addition, winter 2018 [SRR USGS river flow data at Brasher Center](#) show increases in river flows (4000-6000 cfs (cubic feet/second)) which resulted in back to back ice jams down river around Hogsburg.

The study looked at ice jam probability using four flow

scenarios: low (850 cfs), moderate (1400 cfs), and two high flow (4000- and 7000 cfs). The high flow scenarios showed no difference in ice jam thickness and flooding with or without the dam. The study also resulted in strategic investment in research material and data (bathymetric survey, [LIDAR](#), and digital terrain models) which will be used for future planning purposes to benefit the community.

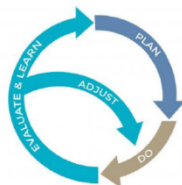
High Flow Scenario (4,000 cfs)
Pre & Post Dam removal



Planning for the next major ice jam is of high priority for David, his staff, and the community. They are considering mitigation options like ice booms; however, there are tradeoffs, depending on siting they could create ice jam/flooding issues upriver. Moreover, preparation measures through land use management,

Preventing Damages Requires Adaptive Planning

- Elements of Coastal Resilience:
- Assessing cause of failure
 - Improving standards and practices
 - Adapting plans
 - Improving policies to facility resilience
 - Recover and rebuilding
 - Managed retreat (buyout programs)
 - Reassess follow subsequent events
 - Adapt plans and redeploy



adaptive planning, resiliency (climate and coastal), flood plain mapping, and public information/data sharing (via tools and policies) are more effective. They now have flood maps, created from the study's resources, which will influence future building decisions. They have an [Emergency Operations Center](#) to educate and assist the community with natural and man-made emergencies. Furthermore, David talked about the costs associated with rebuilding in natural hazard (flooding)

prone areas and thinks a managed retreat should be policy going forward. Also, he gave a "shout-out" to Tiernan Smith, an EMC member, who is on his staff and a key component to this study.

Further Discussion continued with committee members:

- Tenbusch talked about St. Lawrence River (SLR) flooding in 2019 and how the State funded rebuilding in the same location.
- Tenbusch talked about Hurricane Katrina, where plans were made to rebuild to avoid another disaster, however, the locals did not support the changes.
- Washburn referenced the SLR Resiliency Plan and asked David if he expected changes where the SLR and SRR confluence.
 - David responded that there is not a whole lot of change in river level, it is fairly static. There is some back water effect in the SRR, but it is not significant.
- Tenbusch asked if the SRMT had FIRM (Flood Insurance Rate Maps) maps. David replied no.

Tenbusch said that the FIRM maps in SLC are old, not digitized, and almost useless.

- David responded that the LIDAR data is there to create FIRM maps and this is the State's responsibility. [NY Sea Grant](#) is one organization that provides funding and resources for this type of resource.
- [LIDAR from FEMA is available for public download](#) for NYS.
- Tenbusch asked if SRMT coordinated with upriver communities.
 - David replied that they mostly coordinated with DEC and the County. Impacts from the dam removal and study were not connected to upriver communities because of the hydrologic break at the Helena Bridge.
- Consensus from the Committee was that coordination with communities is very important.
- Bullock asked about SRMT resources associated with dam removal, fish bypass, costs, etc.
 - David responded, \$1.5 m for removal and \$2-3 m for pre, post, and restoration work. There are ways to estimate costs ([American Rivers resource](#)). The Hogansburg dam removal was on time and under budget. The [FERC relicensing](#) process was lengthy, the SRMT went in as a stakeholder and came out a licensee. Overall it was a challenging process and they built public support with data and information.
- O'Shea asked about fisheries' impact and if there is any data?
 - David replied that they are seeing, an increase in fish migration, benefits to down river spawning habitat, and walleye are recorded up river. They plan to do another round of fish surveys, 5 years post removal, to analyze changes.
- Bullock asked if the DEC has been helpful with stocking.
 - David replied that the USGS Tunison Laboratory of Aquatic Science is stocking Atlantic salmon in the SRR at Fort Jackson.
- Smith added that SRR Atlantic salmon (Sebago) monitoring has begun.
- David said that the DEC is very supportive of sturgeon stocking efforts in the upper SRR.

6. Report by the Representative of the Board of Legislators (Nicole Terminelli)

Terminelli talked about:

- The Earth Day Resolution passed by the BOL at their April meeting. Also, there was discussion about roadside mowing contracts to control invasive plant species, additional information will be forthcoming.
- Environmental impact studies for the Highway Dept.'s new buildings are complete.
- Intervenor funds for larger solar projects are in process and provides the County more oversight. [Gary Bowitch](#) and County Attorney Steve Button are the County's point people for the [North Side Solar Energy Center](#) project.
- Patty Fisher spoke on behalf of the County's agriculture community for [national agriculture week](#) and is promoting the book: [Tales of the Dairy Godmother](#). Also, in 2017 there were 1253 farms that sold \$191m of product. There is a large concern about the stigmas associated with agriculture in the County and Fisher is working on educational methods to change this.
- For the E+E Committee, Terminelli contacted [Don Meissner](#) about his thoughts on fish passage and left a message.
- The [County's Youth Bureau](#) is hosting a virtual [workshop on 4/29 at 7pm](#) titled: Reducing Your Carbon Footprint.
 - They are also organizing a Trash Dash 5k on 4/24, thus far there are 108 registrations, and they are still looking for volunteers.

- There is a continuing discussion on Black Lake and invasive milfoil mitigation. [Sallie Sheldon from Middlebury College](#) was mentioned for potential biological mitigation with weevils.

7. Report of the Committees

- **Executive:** [See attached.](#)
 - i. Tenbusch gave the report.
 - ii. The Committee talked about events that the EMC is participating in: Trash Dash 5k and Reducing Your Carbon Footprint (see links above).
 1. For the carbon footprint event, the EMC is putting together a list of farms, to recognize their environmental achievements, from different resources, i.e., [NOFA NY](#), [GardenShare](#), [NY Farm Bureau](#), [Cornell Coop Extension](#), etc.
 - a. Terminelli forwarded a list of farms from Cornell Cooperative Extension to Tenbusch.
 - b. Washburn asked if there any other industries to consider other than agriculture.
 - c. Washburn, personally, has done quite a bit on reducing his carbon footprint and would be a good resource for this event.
 2. The Conservation of Resources Committee is considering the [Green Stars Project](#).
- **Conservation of Resources Committee:** [See attached.](#)
 - i. Rau gave the report
- **Environment and the Economy Committee:** [See attached.](#)
 - i. Casserly gave the report.
 - ii. Tozzi spoke with Mike Seymour, an established fishing and hunting guide in the County, and they talked about; Pacific salmon being caught at the Madrid Dam, including the [St. Regis Mohawk Tribe](#) in fish passage projects, and that a fish ladder is a better sell for Atlantic salmon. In addition, for fish passage projects, we need to contact the [USGS Tunison Laboratory of Aquatic Science](#). **Smith will contact.**
 - iii. Washburn is concerned about the survival of Atlantic salmon in warmer water and stress levels.
 - iv. Communicating with local stakeholders, like The Town of Madrid and City of Ogdensburg, was highly recommended by the EMC.
- **Invasive Species Committee:** [See attached.](#)
 - i. Rau gave the report.
 - ii. Washburn asked about Black Lake Association purchasing a harvester. At the low-end \$50k, mid- to high-end \$100-200k. They have rented one in the past at \$100-\$300 per acre.
 1. Rau said a harvester is not the best solution, it is only cosmetic, and they need to consider another option.
 2. Washburn talked about lakes in Lewis and Jefferson County that have stocked a biological control. He also provided two case studies: Cayuga Lake (Finger Lakes) and [Lincoln Pond](#) (Essex Co.).
- **Watershed Management Committee:** [See attached.](#)
 - i. Tenbusch gave the report.

8. Report of the Staff

- Tenbusch talked about his recent CDBG grant application submission.
- Casserly talked about County Planning Board project reviews: solar in Oswegatchie and an industrial greenhouse in Massena.
 - Rau reminded the Committee to reference the shared Staff Report.

9. Unfinished Business: None.

10. New Business: None.

11. Announcements:

Tenbusch and Casserly talked about:

- Completing the Oswegatchie River Local Waterfront Revitalization Program Survey: https://www.surveymonkey.com/r/Oswegatchie_LWRP.
- [Northern Adirondack \(NAC\) Chapter of the NYFOA \(New York Forest Owners Association\) Spring Woodwalk on Herb Bullock's Woodlot, Edwards, NY, 5/15, 9am-1pm, lunch provided.](#)
- Emily Sheridan, from the DEC, shared the following:
 - [NY Sea Grant](#) 2021 applications are due April 30th.
 - DEC [Office of Environmental Justice's Community Impact Grant Program](#) proposals will be accepted through July 1, 2021 from Potsdam, Massena, Ogdensburg, and Gouverneur.
- [2021 Household Hazardous Waste Collection Days, two are planned: May 15th \(9-1pm\), Sept 18th \(9-1pm\), both in Canton.](#)
- Tenbusch shared an EMC Earth Day document that detailed its history and spoke at length about it.

12. Message to Board of Legislators:

- The EMC would like to thank the BOL for their continued passing of an Earth Day resolution.

13. Adjournment: The meeting adjourned at 8:08 pm.

Respectfully submitted by:

Patrick Whalen

Patrick Whalen, Secretary

Minutes drafted by Dakota Casserly.

Tenbusch, John

From: Tenbusch, John
Sent: Monday, April 12, 2021 2:59 PM
To: Catherine Bennett; Sue Rau; Brian Washburn; Nicole Terminelli
Subject: EMC: Working with Youth Advisory Board re recognition for reducing carbon footprint etc.

Good afternoon.

We met on April 1st to discuss how we wanted to assist the Youth Advisory Board develop a list of farms, businesses, etc., that they can recognize for improving their energy efficiency, increasing their sustainability, etc. We thought that we could help develop a list of worthwhile farms, businesses, etc., from which the YAB could choose some award winners. See below for an excerpt from my last email.

At that meeting we decided to contact some organizations that might be able to recommend qualifying farms, businesses, etc.:

- Sue Rau volunteered to contact NOFA-NY and also Local Living Ventures
- Cat Bennett volunteered to contact GardenShare
- I volunteered to contact the County Chamber of Commerce
- Brian Washburn volunteered to contact the County IDA
- Pat Whalen volunteered to contact the NY Farm Bureau
- Nicole Terminelli volunteered to contact Cornell Cooperative Extension

If you HAVE contacted your chosen organization(s), please send me the list of recommended farms, businesses, etc. ASAP.

If you HAVE NOT yet contacted your chosen organization(s), please do so. Then send me the list of recommended farms, businesses, etc. ASAP.

We have a little extra time. The YAB is likely to put off their announcement for a week, until the last week in April. So, let's put together a strong list of qualifying farms, businesses, etc. so the YAB can choose well.

Thanks in advance for your help with this task.

John

PS: BTW, Pat Whalen is laid up with shingles. So, I will contact the Farm Bureau for him.

=====
John F. Tenbusch
He / Him
Planner II
St. Lawrence County Planning Office
Public Safety Complex, 49½ Court Street
Canton, NY 13617-1169
315-379-2292; Fax: 315-379-2252
E-mail: jtenbusch@stlawco.org
Web Site <https://www.stlawco.org/Departments/Planning>
=====

A graphic for a lead out campaign. On the left, the words "GET THE LEAD OUT" are written in large, bold, black letters against a background of crumpled paper. On the right, an orange rectangular box contains white text. The text asks: "Do you live in St. Lawrence County? Is your house over 40 years old? YOUR HOUSE MIGHT BE CONTAMINATED WITH LEAD. Do you have young children? We can help! Get help. Call 315-386-8576".

GET THE LEAD OUT

Do you live in St. Lawrence County?
Is your house over 40 years old?

YOUR HOUSE MIGHT BE CONTAMINATED WITH LEAD.

Do you have young children?
We can help!

Get help. Call 315-386-8576

Planning for the Carbon Calculator:

The students showed this slide:



What they want to do is to name/list businesses, farms, other institutions, organizations, etc. that have been especially forward-thinking in terms of energy efficiency. Their ideas sounded to me a lot like the “Green Star” program that we talked about in the Conservation of Resources Committee: recognize those businesses, etc., that are innovative, and award them a Green Star that they can display. We had talked about making this an ongoing program. We might be able to use the YAB effort as a kick-off for our Green Star program.

But, we need to come up with information on innovative, energy-efficient, sustainable businesses, etc., ASAP. The YAB intends to make their announcement(s) on Earth Day – less than 1 month away.



St. Lawrence County Environmental Management Council Conservation of Resources Committee Meeting Wednesday April 14, 2021

Overview of the *Conservation of Resources Committee*.

- “Conservation” can mean “saving” or “effective/efficient/wise use”.
 - Thus, “conservation of resources” might include topic areas including solid waste management; household hazardous waste management; recycling; energy efficiency; wise use of natural resources of St Lawrence County
 - “Conservation” might also mean “preservation”, as in preservation of endangered/ rare/ significant flora (plants) or fauna (animals/creatures).
 - “Conservation” also means addressing issues such as the climate crisis that threatens environmental devastation for our region.
-

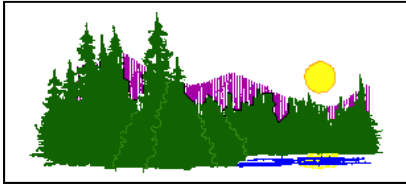
Present: Sue Rau. J. Tenbusch attended as staff.

The meeting began at 4:45 PM.

Working with Youth Advisory Board on projects

- Tenbusch reported that he had met with Alexa Backus, Youth Bureau, and several others to discuss the Youth Advisory Bureau’s upcoming events, including the virtual Trash Dash, and the “Energy Efficiency/Sustainability” recognition program.
 - This meeting was followed by a meeting of the EMC Executive Committee; consensus of the ExComm was to participate with the Youth Bureau / Youth Advisory Board on these projects.
 - There was general discussion about the Youth Bureau projects.

The meeting was adjourned at 5:15 PM.



SLC EMC: Action Item Agenda for Environment + Economy Committee

Members: T. Smith, Rod Tozzi.

Staff: D. Casserly **Guest(s):**

Meeting Date: Monday, April 12, 2021 at 5:00 PM via Conference Call

Time	Item	Outcome	Responsibility	Next Steps
5:00 PM	Meeting starts	<p>Call 1-605-475-2090 Access: 1197050#</p>	<p>Committee members MUST CALL IN</p>	
5:05	Review Report of Last Committee mtg	<ul style="list-style-type: none"> See Meeting Report from March 	All	
5:30	Priority Projects for 2021	<ul style="list-style-type: none"> Fish Ladders/Passage for Grasse and Oswegatchie Rivers Project 	All	<p>Review of Oswegatchie (Heuv, El Weir) fish passages (why, funding, etc.). DEC fish studies on both rivers (Jana Lantry resource). Massena Grasse River dam context. Estimated costs for ladder and passage. Key stakeholders (City of Oberg, Town of Madrid, DEC, etc.) Oswegatchie dam relicensing (Pyrites example). Clarkson prof who researches fish passages. River Institute</p>
5:45	Discuss speakers for EMC meetings		All	
5:50	Develop Pub. Service Announcements	This Committee will develop 3 PSAs per year on E+E topics (at least 1)	All	PSA thoughts for fish project.
5:55	Set date/time for next meeting	May 10, 2021 @ 5pm		
6:00	Adjourn			

Attendance: Herb Bullock, Dakota Casserly, Nicole Terminelli (BOL), Rob Tozzi (E+Ec Member)

- Absent: Tiernan Smith (E+Ec Member and Chair)

Casserly said that Ryan Burkum, former E+Ec Chair, had officially resigned. Tiernan Smith had mentioned that he would take like to be the chair. Tozzi approved TS as chair.

Review Report of Last Committee mtg

•

Priority Projects for 2021 (Fish Passage Project (Ladder or Bypass))

- Tozzi reminded the group to think about the economic expansions after fish ladder.
- Which type ladder (jumping fish) or bypass (bypass is encroachment on terrain (potentially))
- Invasive species (headwater impact)
- Tozzi said that he likes the salmon operation of [Tunison Laboratory](#) in Cortland, NY, hasn't had any success with contacting them.
 - They should be a resource if we develop contact.
- Bullock thinks bypass is not possible.
 - Casserly disagrees. Casserly talked with Town of Madrid Councilman, Alex Smith, who thinks there is plenty of space, it all depends on design, land is Town owned. Alex Smith was Brookfield's project manager for the two Oswegatchie projects (excellent resource).
- Bullock asked if we have contact with Brookfield about the dam in the City of Ogdensburg.
 - Casserly replied, the dam is owned by the City and leased to [Ampersand Energy Partners](#) (subsidiary of [London Economics Partners](#)).
- Bullock said that the committee should build support for these projects through grassroots efforts (local organizations).
- Bullock asked about comparing the Oswegatchie and Grasse because confluence to the SLR is above for the Os and below for the Grasse. Does this impact fishing regulations if passage is built, yes (Lantry (DEC) mentioned in her EMC presentation)
- Terminelli talked about potential new fishing regulations and how they could impact both fisheries.
 - Bullock is thinking that Atlantic salmon, do fall under the same regulation as the Chinook (Pacific salmon).
- Contact Lantry to get a better understanding of fishing regulation(s) if passage(s) are built.
- Research cost comparison between ladder and bypass.
- What other grassroots organizations can we include as stakeholders with this project. Don Meissner and Mike Seymour came to mind.
- Massena (Village) dam context, Rod is going to dig in, Casserly will send him Massena contacts, ownership?
- Terminelli talked about the hesitancy with the Town of Madrid per any dam project, she suggests that we speak to their Town Board.
 - All EMC members on the call were in support of speaking to the Town of Madrid Board to be better represented and discuss the Committee's project.
 - There is historical context about dam removal that is not fully understood and this has caused confusion when dam projects are discussed.

- Notable fishing people in the area: Don Meissner (Nicole will contact) and Mike Seymour (Rod will contact, Casserly will set up the call.)

-

Discuss speakers for EMC meetings

- Herb Bullock suggested the [Clarkson professor who studies fish passage](#)
- Dakota suggested some others:
 - [Luther Aadland, MN DNR](#), Consultant on Oswegatchie projects
 - [Steven Cooke, Dept of Biology, Carleton University, Ottawa ON](#) (not suggested during meeting, new addition)

Develop Pub. Service Announcements

- Tabled

Set date/time for next meeting

- Adjourned @ 620pm



St. Lawrence County Environmental Management Council Invasive Species Committee Meeting Tuesday April 13, 2021

Overview of the Invasive Species Committee.

- The Committee decided that the variety of “invasive species” topics is so large, that it might be best for this committee to work on specific areas.
 - Emerald Ash Borer
 - Eurasian Watermilfoil
 - Wild Parsnip
 - Others
-

Meeting started at 1:05 PM.

Present: Don O’Shea, Chair. Sue Rau; Pat Whalen. John Tenbusch attended as staff.

Report Re Black Lake

J. Tenbusch reported that he had spoken with Michelle Gallagher, who had been referred to him by Joe Lightfoot. Gallagher lives in Rochester but is a seasonal resident on Black Lake. She is working on several projects re: Black Lake: primarily to pay for management of Eurasian Watermilfoil on the Lake. She is writing an application for funding from the St. Lawrence River Redevelopment Authority (RVRDA); Tenbusch suggested that she contact Emily Sheridan at DEC, who manages Eastern Great Lakes projects.

Tenbusch reported that Gallagher called him a second time. She had spoken with Lightfoot; he had indicated that the BOL might be able to provide some funding on a one-time basis. Tenbusch suggested to her that the Black Lake Association might ask for funding to purchase a weed harvester; then they could manage their milfoil problem on an ongoing basis.

There was general discussion about the relative effectiveness of various methods to manage milfoil. P. Whalen recalled that there is probably a Black Lake Management Plan, or a regional management plan. *Staff will follow up.*

Tenbusch reported that Gallagher intends to travel to SLC at the end of April. He had invited her to meet with him, and with members of the EMC.

To-Do Project Items for 2021.

- Emerald Ash Borer. D. O’Shea reported that the publication Forest Leaves, put out by the Pennsylvania Extension, had a recent article that described how three different species of parasitoid wasps were released to kill EABs; all three species were able to survive the winter.
- Spotted Lanternfly. S. Rau reported that she had attended the CCE workshop in February re Spotted Lanternfly. No recent news.
- Hemlock Woolly Adelgid. Tenbusch reported that SLELO PRISM had announced the discovery of HWA in western Oswego County.

Possible Speaker:

- The speaker at the March EMC meeting will be Dr. Jessica Rogers, from SUNY Potsdam. She will present her work on invasive plants (principally purple loosestrife) along roadsides in SLC.
- Tenbusch will ask for report from Black Lake re their Milfoil control program.
- Speaker on Tree of Heaven.
- Rau again suggested Alex French and Ray Bowditch to discuss the community-wide composting project.

Public Service Announcement: Spotted Lanternfly and Tree of Heaven.

The meeting ended at 1:40 PM.



St. Lawrence County Environmental Management Council Watershed Management Committee Meeting Tuesday, April 13, 2021

Overview of *Watershed Management Committee*.

- This Committee has worked on a number of watershed questions/issues, including:
 - Development / promotion of riparian buffers
 - “No Mow Zones” / “Trees for Tribs”
 - Work with U.S.A. Corps of Engineers to bring Sediment Transport Analysis and Regional Trainning to local colleges, high schools, etc.
 - Stenciling storm drains to read: “Don’t Dump – Drains to River”
-

Meeting started at 4:03 PM.

Present: Brian Washburn, Chair; Herb Bullock. J. Tenbusch attended as staff.

Priority Projects for 2021.

- Re Lightfoot request for EMC to be involved in the development of a plan for remediation of Eurasian Watermilfoil on Black Lake
 - H Bullock reported that Sylvia Lake uses divers to pull EAM by the roots.
 - Washburn reported that they have also used benthic barriers
 - They are looking to raise \$20,000 to fund this year’s efforts
 - Meet with M. Gallagher when she is in SLC
 - Washburn discussed a draft rubric to be used to analyze whether to fund efforts to do remediation on a local water body; **see attached**
 - General discussion about presenting this rubric to the EMC and BOL
 - Discussion about Harmful Algae Blooms (HABs) / cyanobacteria on Black Lake
- Tenbusch reported that CPO is looking for an intern to conduct a desk study concerning Black Lake: compiling existing studies, preparing abstracts of same
 - The Committee agreed that such a study might be a good use of County funds
- Suggestion: check on the NYS Federation of Lakes Association
 - Look at Citizens Statewide Lake Assessment Program (CSLAP) (<https://www.dec.ny.gov/chemical/81576.html>)
 - It was reported that the Adirondack Watershed Institute has a yearly sampling program that compiles data about lakes within the park. See <https://www.adkwatershed.org/adirondack-lake-assessment-program-alap>
 - The question was asked: might this type of program be expanded beyond the Adk Park?

Potential Speakers.

- Daniel Kelting, Adk Watershed Institute
- Rep from the Black Lake Association

The meeting was adjourned at 4:55 PM.

Draft Rubric for Financial Assistance by St. Lawrence County

Invasive Species Control for Waterbodies

The following draft rubric has been developed to assist the St. Lawrence County Board of Legislators in reviewing requests for funding to control invasive species.

Is the waterbody surrounded by private lands? If yes record a 0, if no record a 1.	
Is the waterbody bound by NYSDEC forests or WMA's? If yes record a 1, if no record a 0.	
Is there public access constructed and maintained by SLC, a local government, or NYSDEC to the waterbody? If yes record a 1 if no record a 0.	
Is the waterbody on the NYSDEC WI/PWI listing? If yes record a 1 if no record a 0.	
Has assistance from NYSDEC or NYSDOS been requested? If yes record a 1 if no record a 0.	
Is there a lake association? If yes record a 1 if no record a 0.	
If there is a lake association, is the membership percentage of shoreline property owners that are active members to the association greater than 75%? If yes record a 1 if no record a 0.	
Is the lake association an active member of NYSFOLA? If yes record a 1 if no record a 0.	
If a member of NYSFOLA has the association participated in CSLAP? If yes record a 1 if no record a 0.	
If the lake association is a member of NYSFOLA and has participated in CSLAP are the CSLAP reports current? If yes record a 1 if no record a 0.	
Has an invasive species management plan or a watershed management plan been developed? If yes record a 1 if no record a 0.	
If an invasive species management plan or a watershed management plan has been developed have any of the priority recommendations of the plan(s) been implemented? If yes identify and record a 1 if no record a 0. _____	
Is the request for financial support for a priority recommended corrective action? If yes record a 1 if no record a 0.	
If the water body has public access has the economic impact of the public access been evaluated? If yes record a 1 if no record a 0.	
Has the economic impact been peer reviewed? If yes record a 1 if no record a 0.	
If the waterbody has public access has the usage of the public access been documented? If yes record a 1 if no record a 0.	
Score Total	