

# ST. LAWRENCE COUNTY BOARD OF HEALTH MEETING

## March 15, 2022

The St. Lawrence County Board of Health (hereafter known as SLCBOH) met on Tuesday, March 15, 2022, in the Large Conference Room, Human Services Center (via teleconference), Canton, New York 13617.

**MEMBERS PRESENT:** Kevin Acres, Mark Deavers, Dr. Gregory Healey, Nancy Potter, Dr. Andrew Williams, (via teleconference)

**MEMBERS ABSENT:** Jessica Scillieri Smith, Dr. Kathleen Terrence

**OTHERS PRESENT:** Jolene Munger, Interim Director; Shannon Beldock, Administrative Assistant; Kindra Cousineau, PHN; Renae Johnson, SCHN; Jenesse Watson, Emergency Preparedness Coordinator; Amber Sheppard, Coordinator of QA&I; Anne Marie Snell, Health Initiative

### CALL TO ORDER

Dr. Andrew Williams, President, called the meeting to order at 6:12 pm.

### APPROVAL OF MINUTES

**Upon motion by N. Potter, and seconded by K. Acres, the minutes from the February 15, 2022 meeting were approved.**

### PUBLIC COMMENT

No Public Comment.

### **Sanitarian Update: Jolene Munger – per Kindra Cousineau**

#### **Calls for February:**

1. Landlord issue in Norfolk – leaking roof, concerns of mold; frosted windows and electrical box not properly latched – referred to Code Enforcement for site visit.
2. Landlord issue in Massena – apartment flooded a week ago, carpets still wet. Housing Council and resident called - referred to Code Enforcement for site visit.
3. Call regarding regulations/permits for purchasing a mobile park – referred to NYSDOH.
4. Call regarding water testing for restaurants – referred to NYSDOH.
5. Call from Walmart representative doing updates in facility and wanting to review plans – referred to NYSDOH.
6. Homeowner requesting water test for pesticides. Life Science Laboratories and Converse Laboratories numbers provided.
7. Realtor inquiring about regulations on length of time water test is valid. We have no regulations on this for purchase of a home – referred to bank to discuss.
8. Homeowner requesting water testing. Attempted contact (3) times.

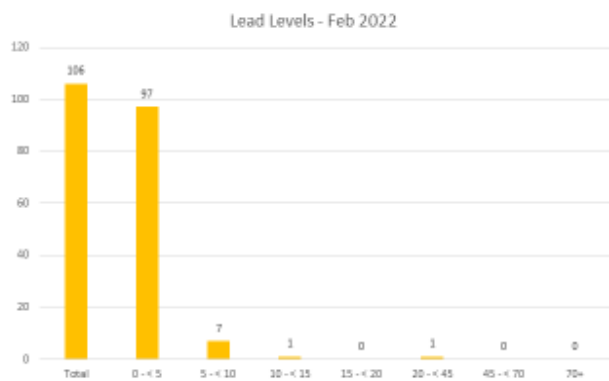
### **Lead Update: Jolene Munger**

- February, 2022 there were (106) lead tests performed
- Of the (106) there were (9) elevated, which is 8.5% elevated
- (79) on caseload as of March 10, 2022.

- 20 ug/dL and 45 ug/dL (1) – on caseload since October 26, 2020. Child is 8.5 years old. We are working to coordinate a conference call between Care Coordination, Environmental, and Health Care Provider.

Per chart below, there are (3) children in this range who should be tested monthly, but only (1) is showing up as actually being tested. There was a discussion on Point of Care testing in PCP offices, the process of PHD receiving lead lab results and reaching out to PCP and parents. Discussed possible barriers to lead testing for families and Amish community as well.

## Lead Update February 2022



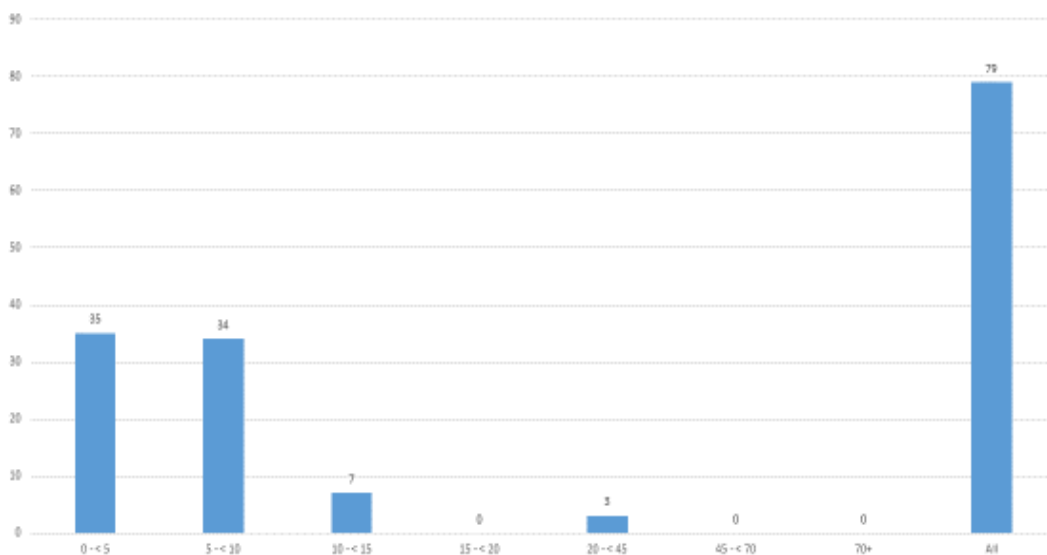
106 total tests for the month of February – of those 9 were considered elevated (8.5%).

79 Active cases as of 03/10/2022.

Case listed under 20 - <45 has been on our caseload since 10/26/2020 and is 8.5 years old. Working to coordinate conference call between Care Coordination, Environmental, and HCP.

Percent Elevated		
2022		
Post-2019, $\geq 5$ $\mu\text{g}/\text{dL}$	9	8.5%
Pre-2019, $\geq 10$ $\mu\text{g}/\text{dL}$	2	1.8%

## Current Active Cases (as of 3/10/22)



## **COVID-19: Jolene Munger – slide presentation**

### **Case Update: As of March 15, 2022**

- 28,108 cases to date
- 7 current hospitalizations
- 212 active cases, 27,715 completed isolation
- 181 cumulative deaths

### **Hospitalizations:**

- Under 10 for month of March.

### **Weekly Cases:**

- 325 cases this week.
- Last week was 307 cases.

### **Daily Home Tests: March, 2022**

- Averaging about 20 per day.

### **Average New Daily Cases per Week:**

- This week we were at 46 cases per day.
- Last week was 43 cases.

### **Monthly Cases by Age Group:**

- February – total of 2,660
- 29% of cases in 0-19 age range
- 37% of cases in 20-44 age range
- March date – total of 683
- 28% of cases in 0-19 age range
- 39% of cases in 20-44 age range
- 12% of cases in the 45-54 age range

### **Hospitalizations by Age Group:**

- February – 78 total – 34 for COVID-19
- 24% of cases in 65-74 age range
- March to date – 19 total.
- 26% of cases in 55-64 age range
- 36% of cases in 65-74 age range

### **Vaccination Status of Hospitalizations: February**

- 34 total hospitalizations
- 22 not vaccinated (64.71%)
- 12 vaccinated (35.29%)

### **St. Lawrence County Statistics: As of March 15, 2022 (per CDC)**

- High Transmission
- Low Community Level
- Positivity rate – 3.2%
- Total Population Fully Vaccinated – 60.6%
- Total Population at Least 1 Dose – 64.3%
- Total Population  $\geq$  5 years of age \*Eligible Population – 63.8% (67.7% = 1 dose)
- 65+ Fully Vaccinated – 85.5% (90.2% = 1 dose)

### **COVID-19 Vaccine Distribution:**

- First doses administered overall: 7,759 (age 5-11 - 1,045)
- Second doses administered overall: 6,959
- Booster doses administered overall: 4,054

## **COVID-19 Vaccine Clinics: Public Health Department – March, 2022**

- Pfizer 12+ - 1<sup>st</sup>, 2<sup>nd</sup>, and Booster Doses
  - Mondays from 8:30 am – 4:00 pm
  - Fridays from 12:00 pm – 4:00 pm
- Moderna 18+ Booster Clinic
  - Mondays from 8:30 am – 4:00 pm
- Johnson & Johnson Single and Booster Doses
  - Fridays from 12:00 pm – 4:00 pm
- Pediatric Clinics (age 5-11)
  - Every Monday 8:30 am – 4:00 pm
  - Every Friday 12:00 pm – 4:00 pm

## **CDC Risk Levels:** As of this morning\*

### Level of Community Transmission – Level of Transmission Risk based on:

- New cases per 100,00 in past 7 days
- Percentage of positive NAATs tests during the past 7 days

### COVID-19 Community Levels – Focus on severity of disease based on:

- New cases per 100,000 in past 7 days
- New COVID-19 admissions per 100,000 population (7-day total)
- Percent of staffed inpatient beds occupied by COVID-19 patients (7-day total)

\*This information had changed prior to the meeting. The Local COVID Stats chart listed on our website was updated to add information for the Community Level.

## **Update to Masking:**

- Effective Wednesday, March 2, 2022 became optional in school settings, except for individuals who are on days 6-10 of quarantine or isolation.
- Masking is still required in the following settings:
  - Healthcare facilities
  - Nursing homes
  - Adult Care Facilities
  - Correctional Facilities
  - Detention Centers
  - Homeless Shelters
  - Domestic Violence Shelters
  - Public Transit and Transportation hubs, as well as trains, planes and airports in accordance with Federal regulations.
- Masking is recommended by the CDC in areas of High Community Levels.

## **What to do if I'm sick?**

- STAY HOME from work/school and activities where you may be in close contact with people
- Take a COVID-19 test.
- Call your Primary Care Provider to discuss your symptoms.
- COVID-19 and other communicable diseases are still prevalent throughout our community.

### **COVID-19 Home Test – What to Do:**

There is an online form for submission of positive home tests. If an individual calls and is unable to submit online, the information is taken over the phone and logged in.

### **Presentation by Dr. Williams: Slide Presentation**

COVID-19 – National Trends; COVID-19 – International Trends; COVID-19 – Wastewater Surveillance; COVID-19 – Data Tracker; COVID-19 – Omicron Variant BA.1 (“Stealth Variant” – BA.2); COVID-19 – Novavax. A discussion followed.

Jolene noted wastewater surveillance is being done in Massena.

## **OTHER ITEMS AND QUESTIONS**

Jolene shared the Public Health Department held its 1<sup>st</sup> Rabies Clinic on Saturday, March 12, 2022. There were (142) animals vaccinated – more were scheduled, but due to the snowy weather conditions there were cancellations.

### **Department Program changes:**

#### **Rabies Program:**

- The Emergency Preparedness Coordinator will be helping to manage the Rabies program.

#### **On-Call Coverage:**

- The Emergency Preparedness Coordinator, Coordinator of QA&I and Community Health Educator will be helping out with On-Call due to a shortage of nursing staff.

#### **Immunizations:**

- Kindra will be covering the Immunization Program.
- The (2) retired nurses who have been helping out with COVID-19 will help with school vaccinations.

### **Department Staffing:**

- Currently have (3) Nurse Positions open (another resignation).
- Community Health Nurse Position open for (15) months now.
- New Deputy Director starts on May 3, 2022. We are excited to have this position filled.
  - Carly Zimmermann
  - Coming from New Hampshire Public Health Services

Jolene noted Kindra and Renae will have 25 years of service this year. In 5 years the department will lose their knowledge of the programs. We need nursing staff on board to train prior to their retirements. An issue with retaining nursing staff seems to be salary.

### **Public Health Department Annual Report:**

- Actively working on this report – spotlighting 2021.
- Report due to County Administrator by April 1, 2022.
- Report will also be provided to BOH members.

The State of Emergency is scheduled to end tomorrow, Wednesday, March 16, 2022. Kevin asked if the next Board of Health meeting would be in person. Dr. Williams noted if things continue as they are, the next meeting will be in person.

Jolene will not be in attendance at the April 19, 2022 meeting. Renae will be hosting.

**OLD BUSINESS**

**EXECUTIVE SESSION**

No Executive Session.

**OTHER BUSINESS**

**ADJOURNMENT/NEXT MEETING**

**Meeting adjourned at 7:00 pm. Next meeting is scheduled for April 19, 2022 at 6:00 pm.**

**ACTIONS ITEMS FOR FOLLOW UP**

N/A